

FISCAL YEAR 2020

ARIZONA TEACHERS ACADEMY



ABOUT THIS REPORT

Per Arizona Revised Statutes §15-1655, the Arizona Board of Regents prepares an annual report of the Arizona Teachers Academy. Included in this report is information on student enrollment and completion in the academy. Narratives for each institution were provided by the institution.

ABOUT THE ARIZONA BOARD OF REGENTS

The Arizona Board of Regents is committed to ensuring access for qualified residents of Arizona to undergraduate and graduate institutions; promoting the discovery, application, and dissemination of new knowledge; extending the benefits of university activities to Arizona's citizens outside the university; and maximizing the benefits derived from the state's investment in education.

MEMBERS

Larry Penley, Chair
Lyndel Manson, Chair Elect
Karrin Taylor Robson, Secretary
Ron Shoopman, Treasurer
Bill Ridenour
Fred DuVal
Kathryn Hackett King
Anthony Rusk, Student Regent
Nikhil Dave, Student Regent
Gov. Doug Ducey, Ex-Officio
Superintendent Kathy Hoffman, Ex-Officio

ABOR EXECUTIVE DIRECTOR

John Arnold

ABOUT THE ACADEMY

The Arizona Teachers Academy (Academy) offers a year-for-year tuition waiver scholarship for students who commit to teach in Arizona public schools. Each of the three public universities, Rio Salado Community College, Scottsdale Community College and Pima Community College, operates a unique Academy allowing the enterprise to offer undergraduate and graduate students in rural and urban settings an opportunity to earn their teaching degree tuition free. Program Graduates have a one-year grace period to begin teaching after completion and each university tracks graduates to determine whether they have met the teaching obligation in their student agreement.

In addition to tuition waiver scholarships, students enrolled in the Academy have access to support services during and after completion of their program of study. These services are provided by the university in partnership with school districts and include new teacher induction and mentoring to improve outcomes and retention.

Although the Academy was limited in its initial launch in fiscal year 2018, new State funding for the Academy in fiscal year 2020 has allowed for increased enrollments and the addition of certificate programs at the community colleges.

More information at arizonateachersacademy.com.

FISCAL YEAR 2020

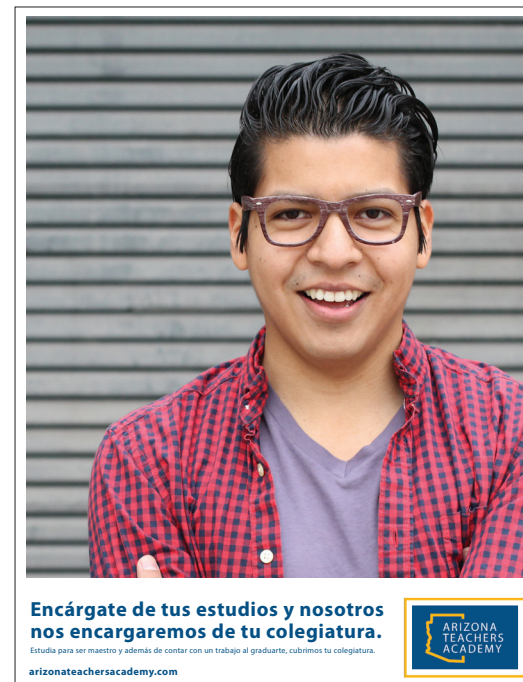
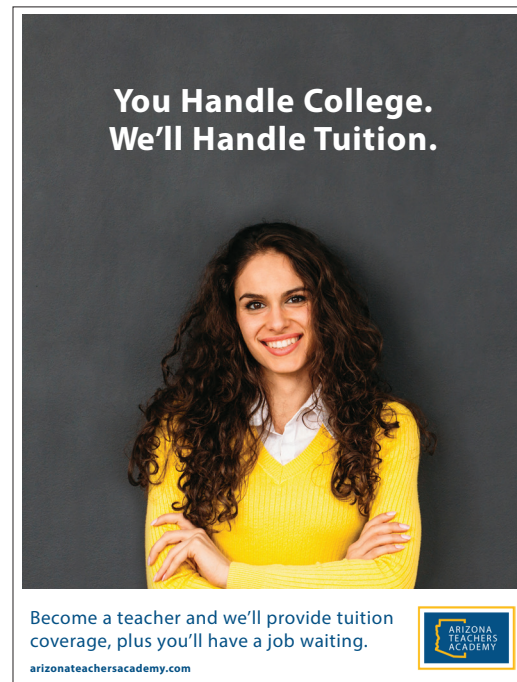
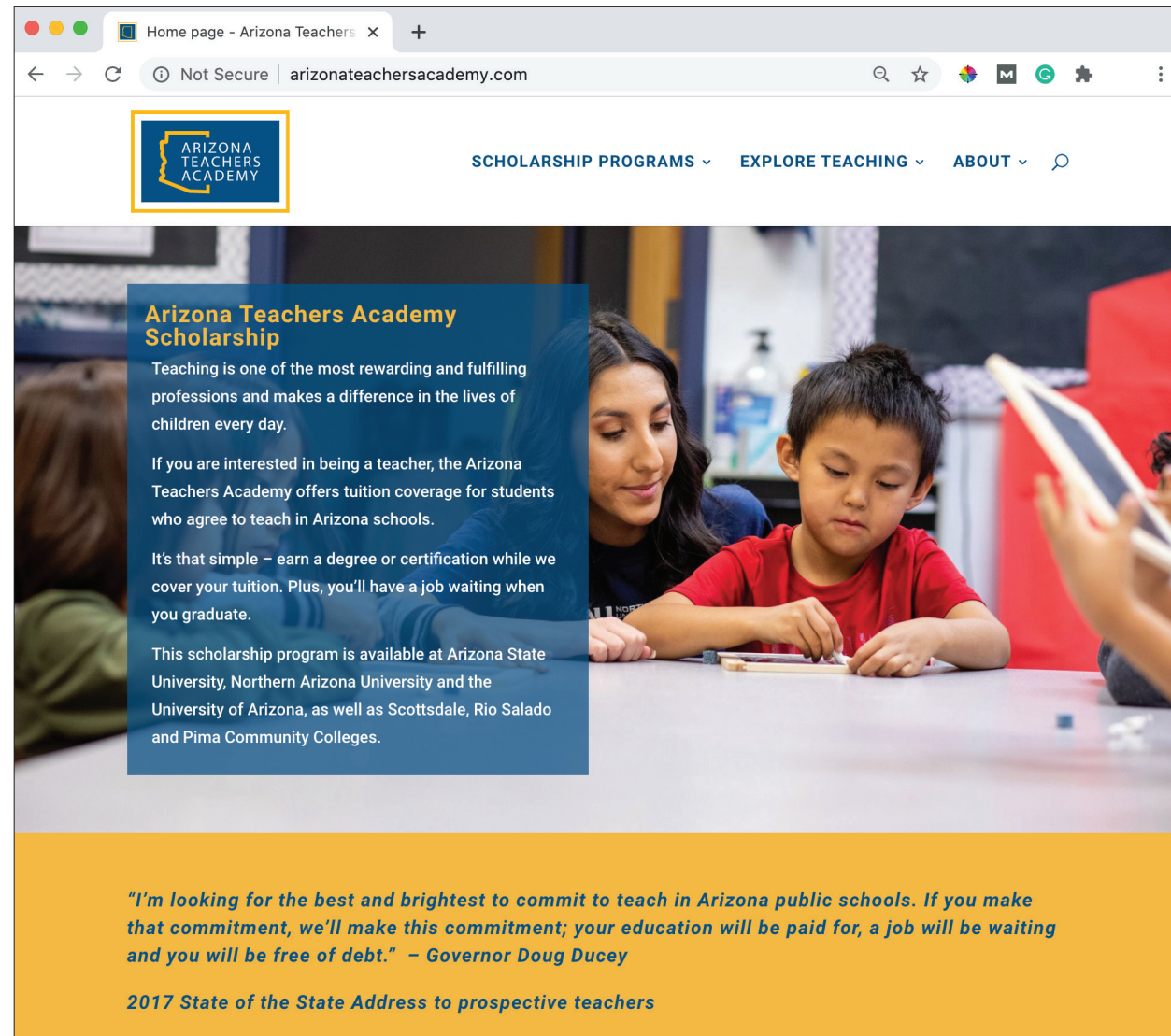
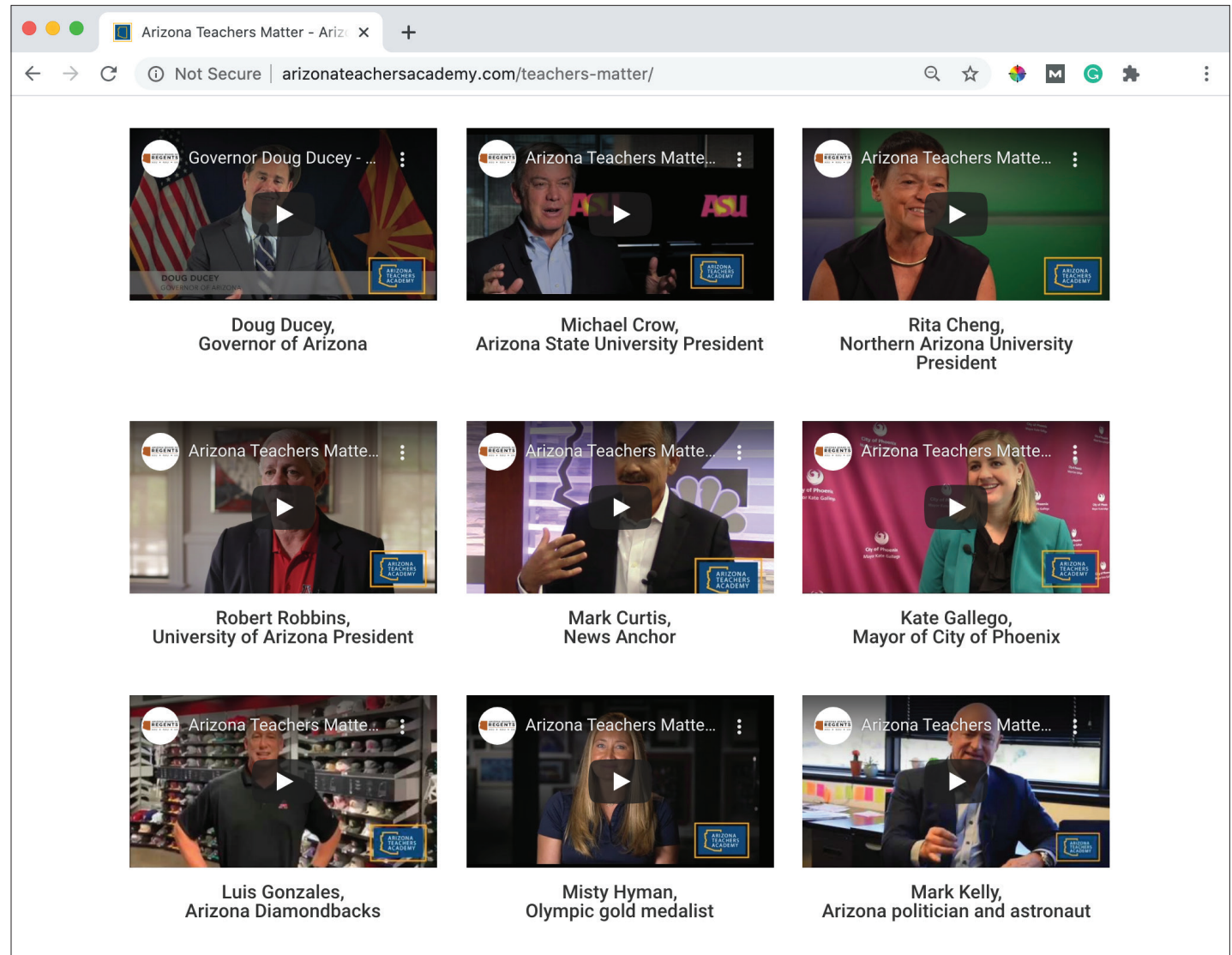
In its third year, enrollment in the Academy has grown exponentially due to the \$15 million General Fund appropriation there are more than 2,700 students receiving funding and over 800 students completing a program. With the new State funding participation in the Academy grew to include Post Baccalaureate Certificate programs at Maricopa County Community College District's Rio Salado College and Scottsdale Community College and Pima Community College. The certificate programs offered by the Community Colleges provide an opportunity for students to participate in online or in person to earn their teaching certification in 17 programs.

The entire \$15 million general fund appropriation was spent, \$14,550,000 went to the institutions for their programs and \$450,000 was used for marketing and administrative expenses.

MARKETING FOR THE ACADEMY

With the new funding available for marketing the Board Office launched an awareness campaign to promote the Academy throughout the state and updated the Academy website. The campaign promoted the Academy through various social media, Spanish radio and print ads, contemporary radio and streaming digital radios, and print ads. Nearly 2,000 posters were distributed to community colleges, libraries, universities, high schools after-school programs and more.

On the Academy's website a video campaign, "Teachers Matter" celebrated teachers as heroes, with clips produced from various Arizonans (Governor Doug Ducey, former Arizona Diamondback Luis Gonzales, Olympic Gold Medalist Misty Hyman and Phoenix Police Chief Jeri Williams, among others) discussing the teachers who made a difference in their lives. Along with the Teachers Matter videos, the Board produced videos of Academy students sharing their stories about how the program is making a difference in their educational journey and career trajectories.



Left: Updated website; Upper right: Teachers matter videos; Bottom-right: posters

ENROLLMENT AND COMPLETION

Total Number Enrolled by Year, by Institution

		2017-2018	2018-2019	2019-2020
Arizona State University	Sophomore	2	3	15
	Junior	24	87	376
	Senior	71	109	436
	Graduate	66	90	149
	Non-Degree	2	1	9
Northern Arizona University	Freshman	4	10	128
	Sophomore	11	31	151
	Junior	40	68	222
	Senior	4	52	311
	Graduate			88
University of Arizona	Sophomore			9
	Junior			38
	Senior			52
	Graduate	15	28	55
	Non-Degree			1
Maricopa Community Colleges	Non-Degree			200
Pima Community College	Non-Degree			127
National Board Certification				340

Percentage of Students who completed each year of the academy and who plan to continue to the subsequent year

	2017-2018	2018-2019	2019-2020
ASU	93%	94%	100%
NAU	98%	96%	99% ¹
UA	NA ²	NA ³	100%
Maricopa CC			90%
Pima CC			95%

Number of teachers who completed an Academy program of study

	2017-2018	2018-2019	2019-2020
ASU	87	116	406
NAU	NA	27	256 ⁴
UA	15	28	91
Maricopa CC			44
Pima CC			5
Total	102	171	802

¹This is tentative and subject to change once Summer 2020 graduates are finalized

²The Academy at the UA is a one-year program and therefore does not have students continue from year to year

³ibid

⁴This is tentative and subject to change once Summer 2020 graduates are finalized

ACADEMY PROGRAMS

ARIZONA STATE UNIVERSITY

The ASU Arizona Teachers Academy offers bachelor's degree, master's degree and non-degree certification programs. Students in these programs can major in early childhood, elementary, physical, secondary, special education or arts education within the Mary Lou Fulton Teachers College, or any other degree at ASU if the student chooses to seek alternative teacher certification.

The Arizona Teachers Academy engages Mary Lou Fulton Teachers College graduates as educator professionals to meet the challenges of teaching in Arizona PreK-12 schools. We strive to offer an authentic learning experience for our participants by providing personalized coaching, collaborative communities and educational resources to support successful teaching in Arizona classrooms. Induction supports focused on topics of interest and critical topics in education to increase the ability of new teachers to respond appropriately to student needs.



Degree Program	# of Students Enrolled	# of Students who Graduated	# of Students Expected to Continue	% Expected to Continue
Applied Biological Sciences (BS)	3		3	100%
Applied Mathematics (BS)	1	1		
Art (BFA)	24	13	11	100%
Biochemistry (BS)	1	1		
Biological Sciences (BS)	3		3	100%
Chemistry (BA)	2		2	100%
Curriculum & Instruction (MED)	4	2	2	100%
Dance (BFA)	16	10	6	100%
Early Childhood & Early Childhood Special Education (BAE)	73	37	36	100%
Earth & Space Exploration (BS)	1		1	100%
Educational Studies (BAE)	2	1	1	100%
Elementary Education (BAE)	235	91	144	100%
Elementary Education (MED)	52	33	19	100%
English (BA)	23	6	17	100%
Family & Human Development (BS)	1		1	100%
History (BA)	14	3	11	100%
Interdisciplinary Studies (BA)	2	1	1	100%
Jewish Studies (BA)	1		1	100%
Mathematics (BS)	8	3	5	100%
Microbiology (BS)	2		2	100%
Music (BA)	1	1		
Music Education (BMUS)	16	3	13	100%
Performance (BMUS)	1	1		
Philosophy (BA)	1		1	100%
Physical Education (MPE)	10	4	6	100%
Physics (BS)	2		2	100%
Political Science (BS)	3	1	2	100%
Psychology (BA)	2		2	100%
Secondary Education (BAE)	250	96	154	100%
Secondary Education (CERT)	9	4	5	100%
Secondary Education (MED)	48	32	16	100%
Sociology (BS)	2	1	1	100%
Spanish (BA)	2	1	1	100%
Special Education & Elementary Education (BAE)	130	36	94	100%
Special Education (MED)	35	22	13	100%
Sustainability (BA)	1		1	100%
Sustainability (BS)	1		1	100%
Theatre (BA)	3	2	1	100%
Total	985	406	579	

NORTHERN ARIZONA UNIVERSITY

The Arizona Teachers Academy at NAU offers bachelors and masters degrees with certification at NAU Flagstaff, NAU statewide locations and NAU online. These delivery options include traditional bachelor's programs beginning with freshman students as well as transfer programs in partnership with community colleges and Grow Your Own programs in local communities to meet specific needs identified by school districts as well as graduate programs for individuals who are seeking a second certification, a specialty area or re-careering to the teaching profession.

NAU's programs meet critical shortage areas such as special education and secondary education fields as well as elementary education in communities throughout Arizona. Induction and mentoring support is provided for Graduates of the Arizona Teachers Academy, supporting their first-year in the classroom.



Degree Program	# of Students Enrolled	# of Students who Graduated	# of Students Expected to Continue	% Expected to Continue
Art Education BSED	17	4	12	94%
Early Childhood Education & Early Childhood Special Education BSED	21		21	100%
Early Childhood Education BSED	15	7	8	100%
Elementary Education - Certification	7		7	100%
Elementary Education - Certification MED	33	1	28	88%
Elementary Education BSED	338	111	223	99%
Elementary Education Yuma BSED	28	8	19	96%
English - Secondary Education MA	1		1	100%
Health Sciences - Physical Education BSED	7	2	5	100%
Mathematics Education MS	9	2	6	89%
Music Secondary Education BMED	23	3	18	91%
Post-Baccalaureate Secondary Education Certification UCERT	1		1	100%
Science Teaching MA	1		1	100%
Secondary Education - Biology BSED	14	5	9	100%
Secondary Education - Chemistry BSED	6	1	3	67%
Secondary Education - Earth Science BSED	4		4	100%
Secondary Education - English BSED	58	16	41	98%
Secondary Education - General Science BSED	4	1	2	75%
Secondary Education - History and Social Studies BSED	58	13	44	98%
Secondary Education - Mathematics BSED	27	2	23	93%
Secondary Education - Physics BSED	3		3	100%
Secondary Education - Spanish BSED	11	2	8	91%
Spanish Education MAT	1		1	100%
Special and Elementary Education BSED	177	61	110	97%
Special Education - Early Childhood Special Education with Certification MED	5	2	3	100%
Special Education - Mild/Moderate Disabilities Certified	7		7	100%
Special Education - Mild/Moderate Disabilities Certified MED	22	5	16	95%
Teaching Science with Certification MAT	2	2		
Total	900	256	633	

UNIVERSITY OF ARIZONA

The University of Arizona has expanded its number of ATA-eligible programs from two to nearly twenty, across five different colleges, and now funds teacher candidates throughout the state. Candidates may pursue certification through graduate, undergraduate, or non-degree courses of study in general and special education, as well as in specialized fields like agricultural education, mathematics, music, and the visual arts. Priority consideration for the academy is given to candidates from local and indigenous communities, particularly first-generation students with high economic need.

Once candidates begin their first year of teaching, they are invited to participate in the academy’s new teacher induction program through which they can access a range of supports, from virtual learning opportunities to one-on-one coaching to networking events. These supports accommodate our new teachers’ busy schedules and provide them with opportunities to develop valuable communities of practice with similarly-situated educators — all while reinforcing evidence-based practices foundational to classroom instruction.

Given both current and projected demand for academy scholarships, the need for additional funding is expected to grow significantly this coming fiscal year.

Degree Program	# of Students Enrolled	# of Students who Graduated	# of Students Expected to Continue	% Expected to Continue
Major in Agricultural Technology Management and Education	8	3	5	100%
Major in Art and Visual Culture Education	5	2	3	100%
Major in Early Childhood Education	12	3	9	100%
Major in Elementary Education	56	22	34	100%
Major in Mathematics	1	0	1	100%
Major in Mild Moderate Disabilities	13	10	3	100%
Major in Music Education	4	2	2	100%
Master of Arts in Special Education	18	16	2	100%
Master of Education in Secondary Education	13	8	5	100%
Master of Education in Teaching and Teacher Education	24	24		
Master of Science in Agricultural Education	1	1		
Total	155	91	64	



MARICOPA COUNTY COMMUNITY COLLEGES

The Maricopa County Community Colleges (MCCCD) Arizona Teachers Academy at Rio Salado and Scottsdale Community Colleges offer post-baccalaureate certification programs. Rio Salado College offers certification programs in Early Childhood Education, Arts Education, Elementary, Secondary and Special Education. Scottsdale Community College offers an Elementary certification program. All certification programs are offered in a hybrid setting with real world teaching experiences throughout Maricopa County and Arizona. Teacher candidates have the choice of two options, Alternative and Traditional Pathways. The Alternative Pathway is for teacher candidates who are working as the teacher of record in a preK-12 classroom but need to complete Arizona state teaching certification and students complete in one to 2 years. The Traditional Pathway is for teacher candidates interested in teaching who complete a 12-week student teaching capstone. This model provides individuals an excellent opportunity for content experts and professionals to recareer into teaching with a strong base of knowledge in such areas as science, technology, engineering and mathematics, among others to the benefit of K-12 classrooms across Arizona.

The programs are designed for working adults and provide extensive mentoring support in the preK-12 classroom environment in addition to credit-bearing certification coursework.

Maricopa's post-baccalaureate certification programs are Arizona State Board approved and programs are offered at affordable tuition rates. Rio Salado and Scottsdale Community Colleges are proud to collaborate with the Arizona Teachers Academy, to provide scholarships for tuition and fees.

PIMA COMMUNITY COLLEGE

The Arizona Teachers Academy at the Pima Community College offers post-baccalaureate certification programs in Elementary, Secondary or Special Education. All three certificates offer online didactic instruction with real world teaching experiences throughout Pima County and Arizona. Students have the choice of two options, Alternative Pathway and Traditional Student Teaching. The Alternative Pathway is for those teachers who are working in a school district but need to complete Arizona State Certification with most students completing in about two years while they are working. The Traditional Pathway is for people interested in teaching but not currently working with a school district, the program supports the student in student teaching placement and because teaching is a high demand occupation, many who graduate obtain employment at one of their student teaching experiences.

The program is designed for people who are working and provides extensive mentoring support in addition to the didactic and student teaching experiences. As for cost, Pima has that covered. Pima's Teachers Education program, which is fully online, has been selected by the State of Arizona to offer the Arizona Teacher's Academy, which offers scholarships covering tuition and fees. Students must hold a bachelor degree or higher, be admitted into one of the Post-baccalaureate teacher preparation certificates, and complete a competitive application.

MARICOPA COUNTY COMMUNITY COLLEGES

Degree Program	# of Students Enrolled	# of Students who Graduated	# of Students Expected to Continue	% Expected to Continue
Secondary Certification - Post Baccalaureate Certificate	22	4	17	94%
Elementary Certification-Post Baccalaureate Certificate	110	24	81	89%
Special Education Mild-Moderate Disabilities - Post Baccalaureate Certificate	55	12	41	95%
Early Childhood - Post Baccalaureate Certificate	5	1	4	100%
Arts Education (Fine Arts, Music, Theater, Dance)	8	3	5	100%
Total	200	44	148	

PIMA COMMUNITY COLLEGE

Degree Program	# of Students Enrolled	# of Students who Graduated	# of Students Expected to Continue	% Expected to Continue
Secondary Certification - Post Degree Certificate	37	2	35	100%
Elementary Certification-Post Degree Certificate	28	1	27	100%
Special Education Mild-Moderate Disabilities Certification - Post-Degree Certificate	47	1	44	96%
Special Education Mild-Moderate Disabilities Certification for Certified Teachers - Post-Degree Certificate	15	1	14	100%
Total	127	5	120	





2700 N CENTRAL AVE. SUITE 400 | PHOENIX, AZ 85004 | AZREGENTS.EDU