

2016 ANNUAL REPORT ON WAGES EARNED BY  
ARIZONA UNIVERSITY SYSTEM GRADUATES

BOARD OF  
**Regents**



ARIZONA'S PUBLIC  
UNIVERSITIES

EDUCATE · DISCOVER · IMPACT

**EXECUTIVE SUMMARY**

**Item Name: 2016 Annual Report on Wages Earned by Arizona University System Graduates**

- Action Item
- Committee Recommendation to Full Board
- First Read of Proposed Policy Change
- Information or Discussion Item

**Issue:** The Committee is asked to review the 2016 Annual Report on Wages Earned by Arizona University System Graduates. In 2015, individuals who were awarded an undergraduate or graduate degree between 1990 and 2015 earned nearly \$15.7 billion in wages and paid approximately \$1.1 billion in state and local taxes

**Enterprise Strategic Plan**

- Empower Student Success and Learning
- Advance Educational Attainment within Arizona
- Create New Knowledge
- Impact Arizona
- Compliance
- Real property purchase/sale/lease
- Other:

**Statutory/Policy Requirements**

None.

**Background/History of Previous Board Action**

- ▶ Measuring the value of a college degree, both to student and the state, has been difficult to quantify without detailed data on the earnings of individual students. Data are now available that match individual students to their earnings in Arizona. This report is intended to document the economic contribution of Arizona's universities to improving the skills of the local workforce and to generating higher incomes for graduates.

**Discussion**

- ▶ According to the US Census Bureau, 2015 American Community Survey, the median earnings in Arizona of an individual with a graduate degree were \$60,884 and for someone with a bachelor's degree their median earnings were \$49,801. By contrast, an

**Contact Information:**

Dan Anderson, ABOR

(602) 229-2544

Dan.Anderson@azregents.edu

## EXECUTIVE SUMMARY

---

individual in Arizona with some college, but no degree, had median earnings of \$33,632 and a high school graduate had median earnings of \$27,947.

- ▶ So among other benefits, an undergraduate student working in Arizona has median earnings that are \$21,854 (78 percent) higher than a high school graduate. The median earnings of a graduate student were \$11,083 (22 percent) above those of a bachelor's degree recipient.
- ▶ And the gap is widening. In 2007, the median earnings of someone with a Bachelor's degree were 70 percent higher than someone with a high school diploma and someone with a graduate degree earned 23 percent more than someone with a Bachelor's degree.
- ▶ In 2015, 271,197 students who graduated from Arizona's public universities between 1989-1990 and 2014-15 earned nearly \$15.7 billion in wages in Arizona and paid an estimated \$1.1 billion in state and local taxes.
- ▶ Their annual average wage was \$57,985, as compared to \$47,937 for all similar workers in Arizona. This is a difference of \$10,048 per graduate or 21 percent.

### Requested Action

The 2016 report on Wages Earned by Arizona University System Graduates in 2015 is presented for the Committee's information and review.

**EXECUTIVE SUMMARY**

---

**Key Findings****Wages Earned**

In 2015, 271,197 students who graduated from Arizona's public universities between 1989-1990 and 2014-15 earned nearly \$15.7 billion in wages in Arizona and paid an estimated \$1.1 billion in state and local taxes.

Their annual average wage was \$57,985, as compared to \$47,937 for all similar workers in Arizona. This is a difference of \$10,048 per graduate or 21 percent.

**Undergraduate and Graduate Earnings**

Individual students with graduate degrees earn varying amounts more than those with bachelor degrees.

- The median wage for recent Arizona State University graduate students who graduated from 2010-2011 through 2014-2015 was \$15,871 or 40 percent greater than the median wage for undergraduate students.
- At Northern Arizona University, the median wage difference was \$13,132 or 34 percent.
- At the University of Arizona, undergraduate and graduate median wages differed by \$21,064 or 62 percent.

**Table I**  
**Median Wages for 2011-15 Undergraduate & Graduate Students in 2015**

	Undergraduate Students	Graduate Students	Difference
Arizona State University	\$39,635	\$55,506	\$15,871
Northern Arizona University	\$38,158	\$51,290	\$13,132
University of Arizona	\$33,910	\$54,974	\$21,064

**EXECUTIVE SUMMARY**

---

Earnings rise over time as well, with some variation by institution. As individuals gain more tenure and experience in their jobs, their wages rise. Impacting wages include the labor market in which the individual is employed, the occupation in which they work and the mix of degrees awarded by the institution. Wages tend to be higher in urban labor markets as compared to rural areas. Some fields such as education pay less than areas such as engineering or business. Yet clearly with all the differences, median wages rise over time.

The comparison below excludes the most recent graduating class of 2014-15. Many students who graduated in that year were students for much of the year and not in the labor market.

**Table II**  
**Median Wages in 2015 for Bachelor Degree Recipients**  
**2014 Graduates Compared to 1990 Graduates**

	Median Wages of a Resident 2014 Bachelor's Graduate	Median Wages of a Resident 1990 Bachelor's Graduate	Difference
Arizona State University	\$37,459	\$75,612	\$38,153 (102%)
Northern Arizona University	\$36,587	\$62,375	\$25,788 (70%)
University of Arizona	\$31,003	\$66,788	\$35,785 (115%)

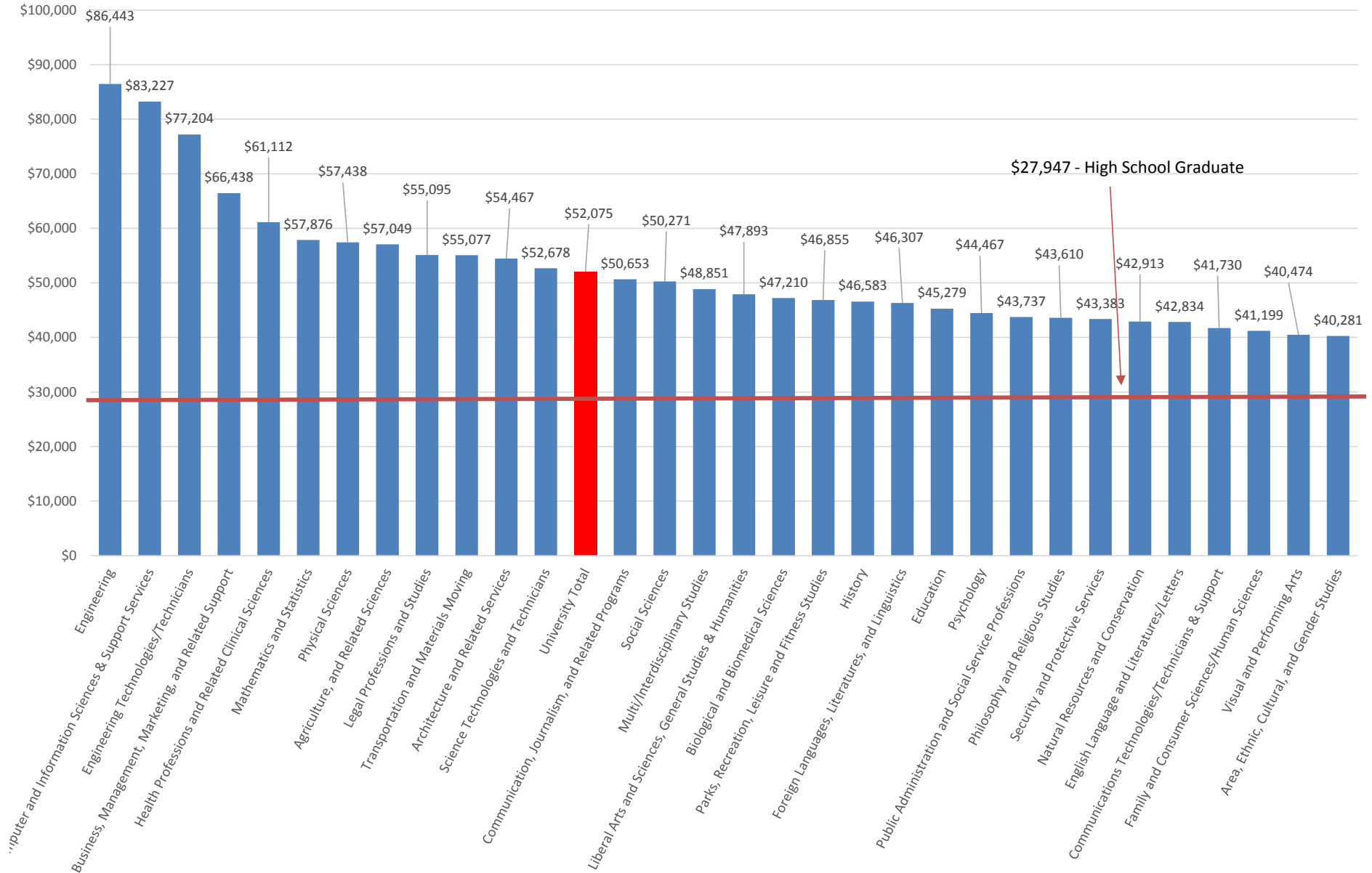
Over time, employment of university graduates declines in Arizona. For resident undergraduates, nearly 80 percent are employed following graduation. This falls to below 40 percent for 1990 graduates. For resident graduate students, over 70 percent are employed following graduation, falling to less than 35 percent for 1990 graduates.

The next page contains a graph of 2015 wages earned in Arizona by undergraduate students from the class of 1990-91 through the class of 2014-15 by major as compared to the earnings of those in Arizona with a high school diploma. Earnings range from \$86,443 for those with an engineering major to \$40,281 for those with a major in Area, Ethnic, Cultural and Gender Studies. By comparison the average earnings of someone with a high school diploma were \$27,947 in 2015.

A more in-depth analysis is provided on the following pages which includes a summary for each institution.

EXECUTIVE SUMMARY

Median Wages of Undergraduates in 2015



## **Wages Earned by Graduates in 2015 Overview**

### **Population**

This report provides an analysis of Arizona University System graduates working in Arizona in 2015 who graduated between 1989-1990 and 2014-2015.

In this report, wages earned come from employer records maintained by the unemployment insurance program of the Arizona Department of Economic Security. The data are only for those individuals working in Arizona who receive a wage from an employer. This excludes those who are self-employed or work outside the state.

The report is also limited to those graduates who received their degree between 1989-1990 and 2014-2015 and for whom the universities had a social security number for matching purposes. Some students are excluded because there were no social security numbers available for matching purposes. Records for graduates before 1989-1990 were excluded because of questionable data quality and quantity. The median wages for 2014-15 graduates under-report as an equivalent annual wage as the wages reported for some students will include wages only for a partial year and/or for wages earned while a students.

An important responsibility of the universities is to prepare students for employment in the local workforce. Two aspects of that preparation are the areas where degrees are awarded and the wages earned by those individuals.

### **Undergraduate Employment and Median Wages**

In 2015, 196,744 undergraduate students who received their degree between 1989-1990 and 2014-2015 had employment in Arizona, earning a total of \$10.5 billion in wages for an average wage of \$53,303. The largest instructional areas where those students are employed and their median wages are contained in tables 1 and 2 below. The eight largest instructional areas accounted for 45,517 (63 percent) of those locally employed undergraduates. In these eight largest instructional areas, the highest median wage was recorded for engineering followed generally by health and related occupations followed by business, management and marketing at all three universities. Education was the next highest paying at Arizona State University, Northern Arizona University and the University of Arizona.

**EXECUTIVE SUMMARY**

**Table 1  
Largest Instructional Areas with Recent Undergraduate Students  
Earning Wages in Arizona (2011-15)**

	Arizona University System	Arizona State University	Northern Arizona University	University of Arizona
Business/Management/Marketing	11,176	6,695	2,236	2,245
Education	6,999	3,471	2,428	1,100
Social Sciences	5,374	3,186	940	1,248
Biological/Biomedical Sciences	4,854	2,643	745	1,466
Health Professions and Related	4,742	2,138	1,551	1,053
Psychology	4,740	2,746	622	1,372
Communication & Journalism	3,998	2,882	540	576
Engineering	3,634	2,365	392	877

**Table 2  
2015 Median Wages for Largest Instructional Areas with Recent  
Undergraduate Students Earning Wages in Arizona (2011-15)**

	Arizona State University	Northern Arizona University	University of Arizona
Business/Management/Marketing	\$46,932	\$42,272	\$45,168
Education	\$39,797	\$38,585	\$36,556
Social Sciences	\$37,701	\$32,412	\$31,916
Biological/Biomedical Sciences	\$30,758	\$26,543	\$24,696
Health Professions and Related	\$54,500	\$53,953	\$32,620
Psychology	\$33,423	\$29,664	\$30,540
Communication & Journalism	\$37,300	\$31,957	\$33,681
Engineering	\$61,220	\$56,217	\$59,549

**Graduate Employment and Median Wages**

In 2015, 74,453 graduate students who received a degree between 1990 and 2015 had employment in Arizona, earning a total of \$5.2 billion in wages for an average wage of \$70,357. The largest instructional areas where those students are employed and their median wages are contained in tables 3 and 4 below. Education has significantly more graduate students employed in Arizona than any other area. Engineering had the highest median wage for these large graduate instructional areas at Northern Arizona University. At Arizona State University, the highest median wage was for engineering, with business/management/marketing graduate students close behind. At the University of Arizona, the same was true with the highest median wage for engineering followed by business/management/marketing.



**EXECUTIVE SUMMARY**

---

**Table 3**  
**Largest Instructional Areas with Recent Graduate Students**  
**Earning Wages in Arizona (2011-15)**  
**Arizona University System**

	Arizona University System	Arizona State University	Northern Arizona University	University of Arizona
Education	7,427	3,191	3,460	776
Health Professions & Related	4,203	570	490	1,373
Business/Management/Marketing	3,689	2,506	578	605
Public Admin. & Social Service	2,244	1,517	20	97
Engineering	1,595	1,285	26	284
Legal Professions	1,198	807		391

**Table 4**  
**2015 Median Wages for Largest Instructional Areas with Recent**  
**Graduate Students Earning Wages in Arizona (2011-15)**  
**Arizona University System**

	Arizona State University	Northern Arizona University	University of Arizona
Education	\$46,466	\$49,213	\$42,959
Health Professions & Related	\$71,043	\$66,446	\$57,166
Business/Management/Marketing	\$80,148	\$65,852	\$80,403
Public Admin. & Social Service	\$46,755	\$54,320	\$45,831
Engineering	\$81,527	\$79,571	\$85,758
Legal Professions	\$66,601		\$59,358

Tables 5 through 10 provide information on the number of recent undergraduate and graduate students who are working in Arizona and their median wages. For each university, separate tables are provided for undergraduate students and graduate students in the top ten instructional areas.

**EXECUTIVE SUMMARY**

---

**Table 5**  
**Largest Instructional Areas with Recent Undergraduate Students (2011-15)**  
**Earning Wages in 2015 in Arizona**  
**Arizona State University**

	Wage Earners	Median Wage
Business/Management/Marketing	6,695	\$46,932
Education	3,471	\$39,797
Social Sciences	3,186	\$37,701
Communication/Journalism	2,882	\$37,300
Psychology	2,746	\$33,423
Biological/Biomedical Sciences	2,643	\$30,758
Multi/Interdisciplinary Studies	2,402	\$39,503
Engineering	2,365	\$61,220
Visual & Performing Arts	2,170	\$31,962
Health Professions & Related	2,138	\$54,500

**Table 6**  
**Largest Instructional Areas with Recent Graduate Students (2011-15)**  
**Earning Wages in 2015 in Arizona**  
**Arizona State University**

	Wage Earners	Median Wage
Education	3,191	\$46,466
Business/Management/Marketing	2,506	\$80,148
Public Admin. & Social Service	1,517	\$46,755
Engineering	1,285	\$81,527
Legal Professions	807	\$66,601
Health Professions and Related	570	\$71,043
Visual & Performing Arts	333	\$35,164
Architecture and Related	316	\$51,278
Computer & Information Sciences	269	\$87,914
Engineering Technologies	249	\$74,809

**EXECUTIVE SUMMARY**

**Table 7**  
**Largest Instructional Areas with Recent Undergraduate Students (2011-15)**  
**Earning Wages in 2015 in Arizona**  
**Northern Arizona University**

	Wage Earners	Median Wage
Education	2,428	\$38,585
Business/Management/Marketing	2,236	\$42,272
Liberal Arts and Sciences	1,727	\$40,452
Health Professions & Related	1,551	\$53,953
Social Sciences	940	\$32,412
Biological/Biomedical Sciences	745	\$26,543
Psychology	622	\$29,664
Communication/Journalism	540	\$31,957
Visual & Performing Arts	524	\$30,013
Science Technologies & Technicians	454	\$39,904

**Table 8**  
**Largest Instructional Areas with Recent Graduate Students (2011-15)**  
**Earning Wages in 2015 in Arizona**  
**Northern Arizona University**

	Wage Earners	Median Wage
Education	3,460	\$49,213
Business/Management/Marketing	578	\$65,852
Health Professions & Related	490	\$66,446
English Language & Literature	228	\$45,731
Social Sciences	106	\$38,327
Psychology	79	\$55,899
Biological/Biomedical Sciences	56	\$42,442
Communication/Journalism	37	\$49,410
Natural Resources & Conservation	36	\$35,624
Engineering	26	\$79,571

**EXECUTIVE SUMMARY**

---

**Table 9**  
**Largest Instructional Areas with Recent Undergraduate Students (2011-15)**  
**Earning Wages in 2015 in Arizona**  
**University of Arizona**

	Wage Earners	Median Wage
Business/Management/Marketing	2,245	\$45,168
Biological & Biomedical Sciences	1,466	\$24,696
Psychology	1,372	\$30,540
Social Sciences	1,248	\$31,916
Education	1,100	\$36,556
Health Professions & Related	1,053	\$32,620
Engineering	877	\$59,549
Multi/Interdisciplinary Studies	804	\$29,946
Visual & Performing Arts	672	\$24,802
Communication/Journalism	576	\$33,681

**Table 10**  
**Largest Instructional Areas with Recent Graduate Students (2011-15)**  
**Earning Wages in 2015 in Arizona**  
**University of Arizona**

	Wage Earners	Median Wage
Health Professions & Related	1,373	\$57,166
Business/Management/Marketing	605	\$80,403
Education	776	\$42,959
Legal Professions	391	\$59,358
Engineering	284	\$85,758
Library Science	262	\$39,348
Social Sciences	186	\$47,425
Physical Sciences	182	\$77,655
Biological/Biomedical Sciences	131	\$59,466
Computer & Information Sciences	118	\$72,799

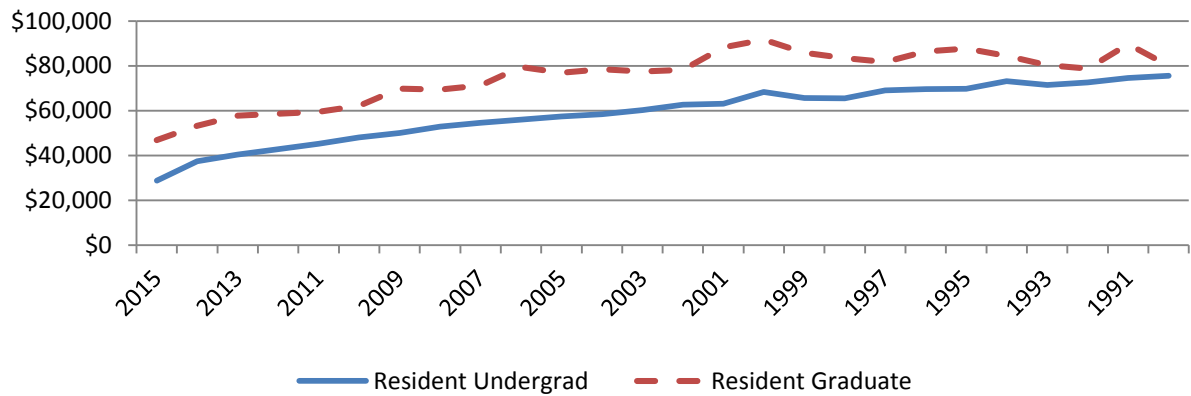
**EXECUTIVE SUMMARY**

---

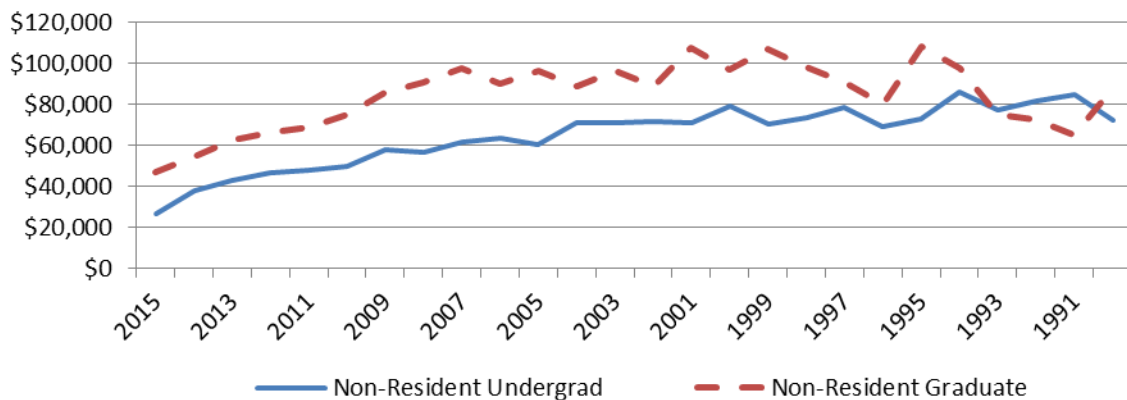
**Appendix – Arizona State University**

**EXECUTIVE SUMMARY**

### Arizona State University - Resident Student Wages in 2015 by Year of Graduation



### Arizona State University - Non-Resident Student Wages in 2015 by Year of Graduation



**EXECUTIVE SUMMARY****Arizona State University**

CIP Code Description	Bachelors		
	Degrees Awarded	Number Working in	Median Wages in
	<b>2011-2015</b>	<b>2015</b>	<b>2015</b>
Agriculture, and Related Sciences	239	135	\$35,990
Natural Resources and Conservation	623	351	\$37,910
Architecture and Related Services	788	474	\$39,333
Area, Ethnic, Cultural, and Gender Studies	255	172	\$32,881
Communication, Journalism, and Related Programs	4,891	2,882	\$37,300
Communications Technologies/Technicians & Support	193	133	\$37,261
Computer and Information Sciences & Support Services	1,476	1,052	\$59,991
Personal and Culinary Services			
Education	4,189	3,471	\$39,797
Engineering	3,894	2,365	\$61,220
Engineering Technologies/Technicians	467	337	\$56,588
Foreign Languages, Literatures, and Linguistics	673	381	\$34,209
Family and Consumer Sciences/Human Sciences	2,471	1,611	\$32,798
Legal Professions and Studies	760	483	\$36,562
English Language and Literatures/Letters	1,722	1,076	\$34,380
Liberal Arts and Sciences, General Studies & Humanities	813	355	\$46,938
Library Science			
Biological and Biomedical Sciences	4,305	2,643	\$30,758
Mathematics and Statistics	601	340	\$44,114
ROTC			
Military Technologies			
Multi/Interdisciplinary Studies	4,021	2,402	\$39,503
Parks, Recreation, Leisure and Fitness Studies	2,171	1,430	\$30,389
Philosophy and Religious Studies	353	200	\$34,897
Theology and Religious Vocations			
Physical Sciences	466	248	\$39,725
Science Technologies and Technicians	534	376	\$58,427
Psychology	4,214	2,746	\$33,423
Security and Protective Services	2,234	1,521	\$36,029
Public Administration and Social Service Professions	1,089	841	\$34,655
Social Sciences	5,769	3,186	\$37,701
Construction Trades			
Mechanic and Repair Technologies/Technicians			
Precision Production			
Transportation and Materials Moving	314	176	\$32,243
Visual and Performing Arts	3,747	2,170	\$31,962
Health Professions and Related Clinical Sciences	3,055	2,138	\$54,500
Business, Management, Marketing, and Related Support	10,965	6,695	\$46,932
History	1,163	634	\$36,622
<b>University Total</b>	<b>68,455</b>	<b>43,024</b>	<b>\$39,635</b>

**Notes:**

Degree recipients may exist in more than one CIP group and career grouping if they earned degrees in multiple areas.

All income is from calendar year 2015.

Cells blackened indicate an N of less than 6.

**EXECUTIVE SUMMARY****Arizona State University**

CIP Code Description	Graduate		
	Degrees Awarded	Number Working in	Median Wages in
	<b>2011-2015</b>	<b>2015</b>	<b>2015</b>
Agriculture, and Related Sciences	55	23	\$63,239
Natural Resources and Conservation	140	45	\$58,732
Architecture and Related Services	672	316	\$51,278
Area, Ethnic, Cultural, and Gender Studies	24	12	\$40,000
Communication, Journalism, and Related Programs	405	176	\$43,097
Communications Technologies/Technicians & Support			
Computer and Information Sciences & Support Services	913	269	\$87,914
Personal and Culinary Services			
Education	5,243	3,191	\$46,466
Engineering	3,684	1,285	\$81,527
Engineering Technologies/Technicians	481	249	\$74,809
Foreign Languages, Literatures, and Linguistics	136	70	\$39,979
Family and Consumer Sciences/Human Sciences	295	215	\$41,177
Legal Professions and Studies	1,269	807	\$66,601
English Language and Literatures/Letters	262	129	\$39,356
Liberal Arts and Sciences, General Studies & Humanities	265	151	\$42,017
Library Science			
Biological and Biomedical Sciences	393	168	\$46,539
Mathematics and Statistics	196	71	\$67,995
ROTC			
Military Technologies			
Multi/Interdisciplinary Studies	224	123	\$46,487
Parks, Recreation, Leisure and Fitness Studies	112	49	\$41,967
Philosophy and Religious Studies	135	63	\$45,348
Theology and Religious Vocations			
Physical Sciences	315	107	\$56,429
Science Technologies and Technicians			
Psychology	491	201	\$56,350
Security and Protective Services	464	197	\$44,940
Public Administration and Social Service Professions	2,044	1,517	\$46,755
Social Sciences	548	195	\$50,391
Construction Trades			
Mechanic and Repair Technologies/Technicians			
Precision Production			
Transportation and Materials Moving			
Visual and Performing Arts	852	333	\$35,164
Health Professions and Related Clinical Sciences	914	570	\$71,043
Business, Management, Marketing, and Related Support	5,554	2,506	\$80,148
History	96	39	\$46,852
<b>University Total</b>	<b>26,182</b>	<b>13,077</b>	<b>\$55,506</b>

**Notes:**

Degree recipients may exist in more than one CIP group and career grouping if they earned degrees in multiple areas.

All income is from calendar year 2015.

Cells blackened indicate an N of less than 6.



**EXECUTIVE SUMMARY**

**Arizona State University**

Year Graduated	Resident Undergraduates						Non-Resident Undergraduates							
	Resident Bachelor Degrees Awarded	Number Employed in Arizona in 2015	Percent Employed in Arizona in 2015	Total Wages Earned 2015	Estimated AZ Total State Tax Revenue	Number Employed in Arizona During All 4 Quarters of 2015	Median Wage in 2015 of Those Employed All 4 Quarters of 2015	Non-Resident Bachelor Degrees Awarded	Number Employed in Arizona in 2015	Percent Employed in Arizona in 2015	Total Wages Earned 2015	Estimated AZ Total State Tax Revenue	Number Employed in Arizona During All 4 Quarters of 2015	Median Wage in 2015 of Those Employed All 4 Quarters of 2015
1990	4,118	1,555	37.8%	\$135,104,620	\$9,492,505	1,312	\$75,612	914	102	11.2%	\$8,824,976	\$626,561	83	\$71,982
1991	4,282	1,832	42.8%	\$162,568,814	\$11,454,330	1,557	\$74,659	992	115	11.6%	\$9,603,369	\$681,343	92	\$84,804
1992	4,349	1,873	43.1%	\$156,838,687	\$11,046,830	1,608	\$72,544	1,000	113	11.3%	\$12,507,357	\$880,343	95	\$81,756
1993	4,505	1,961	43.5%	\$159,885,516	\$11,249,839	1,671	\$71,520	1,151	145	12.6%	\$13,652,930	\$956,698	121	\$77,310
1994	4,542	2,138	47.1%	\$176,312,154	\$12,424,455	1,816	\$73,176	1,084	157	14.5%	\$16,751,267	\$1,171,462	128	\$85,811
1995	4,743	2,319	48.9%	\$188,729,624	\$13,287,226	1,959	\$69,771	1,003	136	13.6%	\$13,915,908	\$974,046	123	\$72,800
1996	4,863	2,357	48.5%	\$187,092,605	\$13,169,720	2,059	\$69,682	941	139	14.8%	\$10,698,872	\$750,183	112	\$69,433
1997	4,980	2,513	50.5%	\$203,874,862	\$14,338,160	2,179	\$69,102	1,129	178	15.8%	\$15,464,124	\$1,085,493	149	\$78,311
1998	5,151	2,691	52.2%	\$207,308,100	\$14,603,398	2,335	\$65,571	1,444	218	15.1%	\$17,256,405	\$1,219,560	180	\$73,750
1999	5,126	2,648	51.7%	\$198,225,755	\$13,969,570	2,280	\$65,691	1,475	240	16.3%	\$20,398,237	\$1,429,737	208	\$70,228
2000	5,421	2,937	54.2%	\$220,191,213	\$15,507,525	2,560	\$68,295	1,621	290	17.9%	\$24,758,543	\$1,745,837	247	\$78,938
2001	5,303	2,852	53.8%	\$203,534,013	\$14,335,819	2,491	\$63,161	1,547	256	16.5%	\$20,590,834	\$1,440,294	217	\$71,253
2002	5,698	3,169	55.6%	\$220,166,063	\$15,543,116	2,733	\$62,625	1,438	251	17.5%	\$20,581,918	\$1,448,796	200	\$71,431
2003	6,029	3,374	56.0%	\$225,673,766	\$15,936,484	2,875	\$60,299	1,521	297	19.5%	\$22,572,374	\$1,588,201	241	\$71,199
2004	6,421	3,693	57.5%	\$236,745,030	\$16,750,303	3,169	\$58,460	1,576	289	18.3%	\$22,134,172	\$1,558,580	248	\$70,855
2005	6,806	4,010	58.9%	\$246,858,528	\$17,514,836	3,423	\$57,396	1,730	322	18.6%	\$21,538,026	\$1,524,013	268	\$60,256
2006	7,056	4,231	60.0%	\$255,352,977	\$18,095,694	3,614	\$55,996	1,695	302	17.8%	\$20,297,341	\$1,433,355	244	\$63,226
2007	7,179	4,343	60.5%	\$247,031,955	\$17,571,850	3,640	\$54,638	1,748	356	20.4%	\$23,034,312	\$1,627,680	302	\$61,556
2008	7,457	4,465	59.9%	\$243,505,275	\$17,355,638	3,713	\$52,875	1,903	360	18.9%	\$20,139,498	\$1,446,178	284	\$56,383
2009	7,698	4,652	60.4%	\$233,241,274	\$16,678,258	3,831	\$49,999	2,056	356	17.3%	\$19,867,022	\$1,410,844	279	\$57,648
2010	8,303	5,331	64.2%	\$253,723,955	\$18,226,133	4,403	\$48,037	2,059	413	20.1%	\$19,288,759	\$1,382,173	315	\$49,783
2011	8,606	5,689	66.1%	\$252,499,178	\$18,285,103	4,622	\$45,246	2,130	454	21.3%	\$19,671,184	\$1,422,082	337	\$47,806
2012	9,255	6,311	68.2%	\$253,823,671	\$18,624,015	5,038	\$42,780	2,264	527	23.3%	\$22,056,269	\$1,616,359	390	\$46,564
2013	9,813	7,067	72.0%	\$261,419,626	\$19,469,852	5,508	\$40,370	2,530	620	24.5%	\$22,935,467	\$1,709,144	445	\$42,741
2014	9,958	7,477	75.1%	\$253,271,946	\$19,372,990	5,753	\$37,459	3,139	812	25.9%	\$25,986,606	\$2,002,529	556	\$37,734
2015*	10,309	8,393	81.4%	\$206,593,673	\$17,622,969	5,242	\$28,767	3,574	1,266	35.4%	\$23,604,600	\$2,135,365	580	\$26,497
<b>TOTAL</b>	<b>167,971</b>	<b>99,881</b>	<b>59.5%</b>	<b>5,589,572,879</b>	<b>401,926,618</b>	<b>81,391</b>		<b>43,664</b>	<b>8,714</b>	<b>20.0%</b>	<b>488,130,371</b>	<b>35,266,858</b>	<b>6,444</b>	

**Notes:**  
Degree recipients are included in only one student grouping and one graduation year based upon their highest degree awarded.  
All income is from calendar year 2015.  
Estimated Arizona state tax revenue assumes the following rates and income levels: <=\$25k = 12.6%; >\$25k and <=\$75k = 6.8%; >\$75k and <=\$100k = 7.2%; >\$100k = 6.9%.  
\* Many of these students were working before graduating and/or worked for less than a year.

**EXECUTIVE SUMMARY**

**Arizona State University**

Year Graduated	Resident Graduates						Non-Resident Graduates							
	Resident Graduate Degrees Awarded	Number Employed in Arizona in 2015	Percent Employed in Arizona in 2015	Total Wages Earned 2015	Estimated AZ Total State Tax Revenue	Number Employed in Arizona During All 4 Quarters of 2015	Median Wage in 2015 of Those Employed All 4 Quarters of 2015	Non-Resident Graduate Degrees Awarded	Number Employed in Arizona in 2015	Percent Employed in Arizona in 2015	Total Wages Earned 2015	Estimated AZ Total State Tax Revenue	Number Employed in Arizona During All 4 Quarters of 2015	Median Wage in 2015 of Those Employed All 4 Quarters of 2015
1990	1,110	386	34.8%	\$38,534,726	\$2,711,179	319	\$80,042	616	81	13.1%	\$8,541,105	\$598,267	67	\$87,367
1991	1,329	479	36.0%	\$47,740,174	\$3,359,247	389	\$89,767	527	65	12.3%	\$4,624,961	\$327,917	49	\$65,238
1992	1,248	481	38.5%	\$51,677,249	\$3,632,169	397	\$78,713	509	47	9.2%	\$3,945,807	\$278,911	41	\$72,384
1993	1,416	581	41.0%	\$55,617,207	\$3,898,147	486	\$80,296	592	52	8.8%	\$4,753,161	\$332,807	44	\$75,177
1994	1,539	629	40.9%	\$61,705,538	\$4,333,179	524	\$84,413	594	37	6.2%	\$3,811,497	\$265,235	29	\$97,517
1995	1,711	755	44.1%	\$77,692,727	\$5,440,929	619	\$87,674	648	57	8.8%	\$6,023,496	\$423,762	46	\$108,407
1996	1,629	755	46.3%	\$77,748,393	\$5,427,954	644	\$86,372	641	69	10.8%	\$6,590,372	\$458,779	60	\$80,322
1997	1,720	780	45.3%	\$76,968,431	\$5,387,462	668	\$81,768	752	104	13.8%	\$10,310,751	\$720,436	87	\$90,700
1998	1,770	798	45.1%	\$78,882,570	\$5,534,549	686	\$83,434	766	110	14.4%	\$11,862,180	\$826,294	94	\$98,565
1999	1,846	907	49.1%	\$89,620,708	\$6,274,719	781	\$85,933	792	98	12.4%	\$10,199,636	\$714,279	79	\$106,805
2000	1,784	883	49.5%	\$91,057,114	\$6,363,981	754	\$91,636	852	133	15.6%	\$13,214,626	\$922,215	107	\$96,966
2001	1,707	830	48.6%	\$87,219,937	\$6,097,529	710	\$88,248	856	110	12.9%	\$11,361,782	\$788,637	94	\$107,667
2002	1,975	1,051	53.2%	\$98,627,084	\$6,891,781	900	\$78,210	817	122	14.9%	\$11,024,951	\$776,903	97	\$88,568
2003	2,049	1,111	54.2%	\$103,970,402	\$7,271,769	945	\$77,484	930	141	15.2%	\$14,058,199	\$985,785	118	\$96,507
2004	2,013	1,115	55.4%	\$101,631,863	\$7,107,420	957	\$78,550	1,127	201	17.8%	\$18,848,771	\$1,324,664	171	\$88,684
2005	1,987	1,116	56.2%	\$99,874,203	\$7,004,543	961	\$77,004	883	150	17.0%	\$13,920,657	\$978,349	119	\$96,430
2006	1,893	1,112	58.7%	\$99,026,225	\$6,920,293	960	\$79,556	1,097	174	15.9%	\$15,622,126	\$1,094,360	148	\$89,925
2007	2,063	1,236	59.9%	\$101,791,712	\$7,111,159	1,061	\$71,292	1,159	181	15.6%	\$18,556,756	\$1,300,165	149	\$97,576
2008	2,337	1,447	61.9%	\$117,307,680	\$8,225,680	1,250	\$69,472	1,158	183	15.8%	\$16,035,303	\$1,126,678	149	\$90,619
2009	2,472	1,575	63.7%	\$120,529,619	\$8,459,880	1,336	\$69,815	1,699	294	17.3%	\$24,209,722	\$1,698,580	236	\$85,955
2010	2,717	1,779	65.5%	\$122,221,491	\$8,573,012	1,539	\$62,206	1,613	320	19.8%	\$25,412,196	\$1,791,010	254	\$75,195
2011	2,794	1,858	66.5%	\$121,844,544	\$8,598,826	1,591	\$59,543	1,767	360	20.4%	\$26,735,513	\$1,884,334	301	\$69,035
2012	2,670	1,822	68.2%	\$111,943,626	\$7,904,436	1,529	\$58,661	1,942	424	21.8%	\$29,569,311	\$2,093,097	339	\$66,237
2013	2,756	2,012	73.0%	\$121,262,621	\$8,580,377	1,698	\$57,792	2,163	491	22.7%	\$31,775,334	\$2,254,066	374	\$62,654
2014	2,712	2,067	76.2%	\$119,792,255	\$8,475,745	1,732	\$53,260	2,589	610	23.6%	\$34,238,041	\$2,465,481	449	\$54,622
2015*	2,774	2,230	80.4%	\$94,549,472	\$7,091,642	1,454	\$46,893	3,341	867	26.0%	\$35,209,054	\$2,677,609	362	\$47,055
<b>TOTAL</b>	<b>52,021</b>	<b>29,795</b>	<b>57.3%</b>	<b>2,368,837,574</b>	<b>166,677,606</b>	<b>24,890</b>		<b>30,430</b>	<b>5,481</b>	<b>18.0%</b>	<b>410,455,307</b>	<b>29,108,619</b>	<b>4,063</b>	

**Notes:**

Degree recipients are included in only one student grouping and one graduation year based upon their highest degree awarded.

All income is from calendar year 2015.

Estimated Arizona state tax revenue assumes the following rates and income levels: <= \$25k = 12.6%; >\$25k and <=\$75k = 6.8%; >\$75k and <=\$100k = 7.2%; >\$100k = 6.9%.

\* Many of these students were working before graduating and/or worked for less than a year.

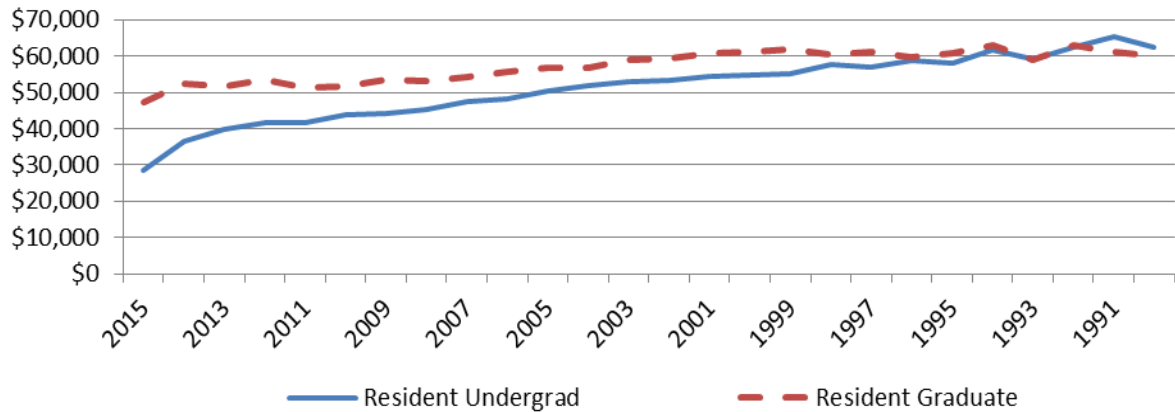
**EXECUTIVE SUMMARY**

---

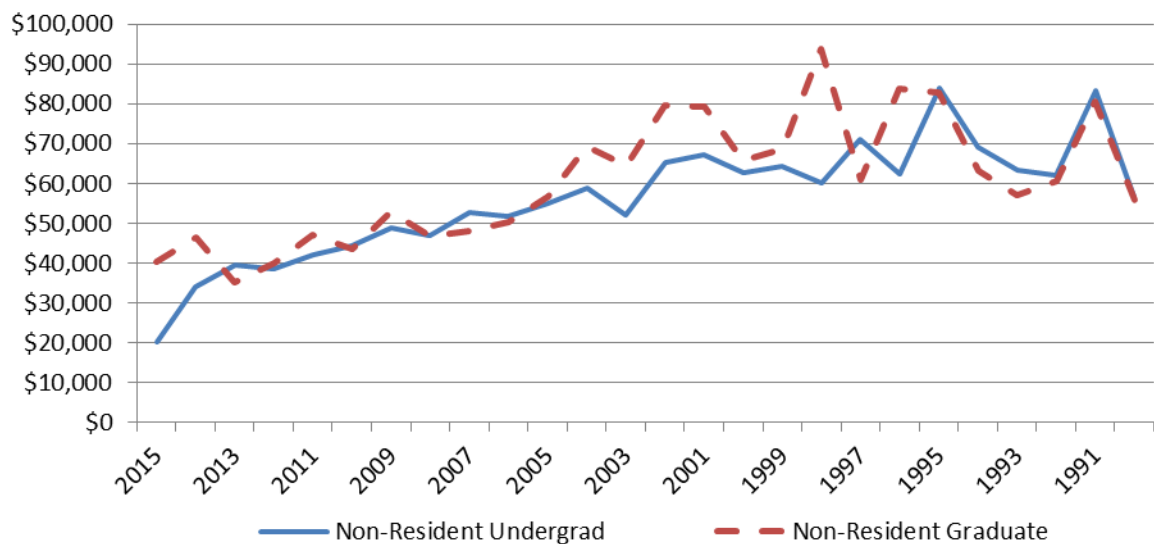
**Appendix – Northern Arizona University**

**EXECUTIVE SUMMARY**

**Northern Arizona University - Resident Student Wages in 2015 by Year of Graduation**



**Northern Arizona University - Non-Resident Student Wages in 2015 by Year of Graduation**



**EXECUTIVE SUMMARY****Northern Arizona University**

CIP Code Description	Bachelors		
	Degrees Awarded <b>2011-2015</b>	Number Working in <b>2015</b>	Median Wages in <b>2015</b>
Agriculture, and Related Sciences			
Natural Resources and Conservation	450	230	\$26,666
Architecture and Related Services			
Area, Ethnic, Cultural, and Gender Studies	46	29	\$28,836
Communication, Journalism, and Related Programs	987	540	\$31,957
Communications Technologies/Technicians & Support			
Computer and Information Sciences & Support Servic	125	64	\$59,576
Personal and Culinary Services			
Education	3,088	2,428	\$38,585
Engineering	782	392	\$56,217
Engineering Technologies/Technicians			
Foreign Languages, Literatures, and Linguistics	159	91	\$29,118
Family and Consumer Sciences/Human Sciences			
Legal Professions and Studies	15	8	\$27,226
English Language and Literatures/Letters	381	215	\$34,171
Liberal Arts and Sciences, General Studies & Human	2,471	1,727	\$40,452
Library Science			
Biological and Biomedical Sciences	1,290	745	\$26,543
Mathematics and Statistics	128	64	\$33,806
ROTC			
Military Technologies			
Multi/Interdisciplinary Studies	100	67	\$22,430
Parks, Recreation, Leisure and Fitness Studies	736	372	\$25,438
Philosophy and Religious Studies	89	46	\$24,897
Theology and Religious Vocations			
Physical Sciences	509	235	\$33,439
Science Technologies and Technicians	628	454	\$39,904
Psychology	1,015	622	\$29,664
Security and Protective Services			
Public Administration and Social Service Professio	266	166	\$34,662
Social Sciences	1,690	940	\$32,412
Construction Trades			
Mechanic and Repair Technologies/Technicians			
Precision Production			
Transportation and Materials Moving			
Visual and Performing Arts	908	524	\$30,013
Health Professions and Related Clinical Sciences	2,167	1,551	\$53,953
Business, Management, Marketing, and Related Suppo	3,760	2,236	\$42,272
History	209	95	\$26,951
<b>University Total</b>	<b>21,999</b>	<b>13,841</b>	<b>\$38,158</b>

**Notes:**

Degree recipients may exist in more than one CIP group and career grouping if they earned degrees in multiple areas.

All income is from calendar year 2015.

Cells blackened indicate an N of less than 6.

**EXECUTIVE SUMMARY****Northern Arizona University**

CIP Code Description	Graduate		
	Degrees Awarded	Number Working in	Median Wages in
	<b>2011-2015</b>	<b>2015</b>	<b>2015</b>
Agriculture, and Related Sciences			
Natural Resources and Conservation	140	36	\$35,624
Architecture and Related Services			
Area, Ethnic, Cultural, and Gender Studies			
Communication, Journalism, and Related Programs	57	37	\$49,410
Communications Technologies/Technicians & Support			
Computer and Information Sciences & Support Servic			
Personal and Culinary Services			
Education	4,583	3,460	\$49,213
Engineering	58	26	\$79,571
Engineering Technologies/Technicians			
Foreign Languages, Literatures, and Linguistics	23		
Family and Consumer Sciences/Human Sciences			
Legal Professions and Studies			
English Language and Literatures/Letters	424	228	\$45,731
Liberal Arts and Sciences, General Studies & Human	46	16	\$44,406
Library Science			
Biological and Biomedical Sciences	121	56	\$42,442
Mathematics and Statistics	41	22	\$53,591
ROTC			
Military Technologies			
Multi/Interdisciplinary Studies	35	22	\$29,755
Parks, Recreation, Leisure and Fitness Studies			
Philosophy and Religious Studies			
Theology and Religious Vocations			
Physical Sciences	107	32	\$50,765
Science Technologies and Technicians			
Psychology	147	79	\$55,899
Security and Protective Services			
Public Administration and Social Service Professio	30	20	\$54,320
Social Sciences	254	106	\$38,327
Construction Trades			
Mechanic and Repair Technologies/Technicians			
Precision Production			
Transportation and Materials Moving			
Visual and Performing Arts	50	15	\$40,395
Health Professions and Related Clinical Sciences	786	490	\$66,446
Business, Management, Marketing, and Related Suppo	821	578	\$65,852
History	38	18	\$37,895
<b>University Total</b>	<b>7,762</b>	<b>5,245</b>	<b>\$51,290</b>

**Notes:**

Degree recipients may exist in more than one CIP group and career grouping if they earned degrees in multiple areas.

All income is from calendar year 2015.

Cells blackened indicate an N of less than 6.

**EXECUTIVE SUMMARY**

**Northern Arizona University**

Year Graduated	Resident Undergraduates						Non-Resident Undergraduates							
	Resident Bachelor Degrees Awarded	Number Employed in Arizona in 2015	Percent Employed in Arizona in 2015	Total Wages Earned 2015	Estimated AZ Total State Tax Revenue	Number Employed in Arizona During All 4 Quarters of 2015	Median Wage in 2015 of Those Employed All 4 Quarters of 2015	Non-Resident Bachelor Degrees Awarded	Number Employed in Arizona in 2015	Percent Employed in Arizona in 2015	Total Wages Earned 2015	Estimated AZ Total State Tax Revenue	Number Employed in Arizona During All 4 Quarters of 2015	Median Wage in 2015 of Those Employed All 4 Quarters of 2015
1990	1,581	644	40.7%	\$44,209,290	\$3,118,238	553	\$62,375	310	35	11.3%	\$2,088,707	\$148,962	28	\$56,611
1991	1,722	770	44.7%	\$55,905,555	\$3,932,294	663	\$65,314	266	36	13.5%	\$2,434,929	\$174,857	29	\$83,165
1992	2,008	897	44.7%	\$61,722,571	\$4,361,489	766	\$62,433	266	31	11.7%	\$2,204,220	\$154,803	27	\$62,060
1993	2,249	1,019	45.3%	\$68,295,491	\$4,810,427	885	\$59,277	247	33	13.4%	\$2,798,456	\$198,025	31	\$63,367
1994	2,384	1,081	45.3%	\$71,490,298	\$5,059,621	918	\$61,707	242	25	10.3%	\$2,395,838	\$170,255	16	\$69,259
1995	2,255	1,072	47.5%	\$75,044,391	\$5,282,499	935	\$58,001	221	26	11.8%	\$2,132,335	\$151,815	22	\$83,787
1996	2,552	1,228	48.1%	\$79,834,012	\$5,648,596	1,055	\$58,684	332	42	12.7%	\$3,098,992	\$218,026	36	\$62,254
1997	2,385	1,120	47.0%	\$72,019,674	\$5,093,903	948	\$57,059	360	52	14.4%	\$3,382,546	\$242,334	43	\$71,193
1998	2,280	1,144	50.2%	\$72,904,160	\$5,148,733	975	\$57,585	457	47	10.3%	\$3,121,205	\$219,339	40	\$60,038
1999	2,463	1,176	47.8%	\$70,195,257	\$4,966,135	995	\$55,218	508	60	11.8%	\$4,226,306	\$297,371	50	\$64,434
2000	2,494	1,243	49.8%	\$75,584,749	\$5,347,717	1,065	\$54,842	478	51	10.7%	\$3,164,670	\$226,123	46	\$62,726
2001	2,418	1,228	50.8%	\$68,778,915	\$4,892,326	1,041	\$54,482	513	59	11.5%	\$4,339,552	\$306,620	51	\$67,342
2002	2,439	1,289	52.9%	\$72,822,872	\$5,169,911	1,109	\$53,232	434	57	13.1%	\$3,377,195	\$241,442	47	\$65,372
2003	2,560	1,392	54.4%	\$79,501,680	\$5,623,351	1,191	\$52,883	444	57	12.8%	\$3,363,550	\$235,832	49	\$52,096
2004	2,439	1,296	53.1%	\$69,252,440	\$4,943,127	1,107	\$51,698	435	67	15.4%	\$3,891,737	\$281,981	50	\$58,912
2005	2,446	1,316	53.8%	\$69,039,947	\$4,913,661	1,101	\$50,477	417	57	13.7%	\$2,969,580	\$209,961	48	\$54,925
2006	2,426	1,384	57.1%	\$68,209,347	\$4,884,471	1,176	\$48,383	415	62	14.9%	\$2,840,290	\$205,788	45	\$51,671
2007	2,427	1,360	56.0%	\$64,250,828	\$4,606,965	1,140	\$47,378	432	73	16.9%	\$3,580,451	\$260,163	61	\$52,745
2008	2,392	1,399	58.5%	\$63,650,687	\$4,580,491	1,163	\$45,287	493	69	14.0%	\$3,132,780	\$222,688	55	\$46,793
2009	2,497	1,530	61.3%	\$67,584,288	\$4,876,361	1,259	\$44,362	560	82	14.6%	\$3,666,332	\$269,700	65	\$48,948
2010	2,746	1,725	62.8%	\$74,158,805	\$5,387,675	1,405	\$43,696	601	99	16.5%	\$3,808,748	\$278,130	68	\$44,380
2011	3,024	1,967	65.1%	\$77,625,155	\$5,689,053	1,597	\$41,658	691	116	16.8%	\$4,368,249	\$324,636	87	\$42,015
2012	3,320	2,230	67.2%	\$86,903,914	\$6,405,667	1,792	\$41,766	799	149	18.7%	\$5,087,236	\$384,499	108	\$38,690
2013	3,341	2,411	72.2%	\$89,065,202	\$6,649,495	1,892	\$39,852	858	198	23.1%	\$6,984,666	\$529,864	150	\$39,654
2014	3,693	2,781	75.3%	\$91,238,613	\$7,012,521	2,134	\$36,587	1,063	286	26.9%	\$7,473,752	\$622,030	175	\$34,178
2015*	3,751	3,034	80.9%	\$72,872,821	\$6,289,371	1,724	\$28,630	1,042	427	41.0%	\$5,001,307	\$515,604	116	\$20,103
<b>TOTAL</b>	<b>66,292</b>	<b>37,736</b>	<b>56.9%</b>	<b>1,862,160,961</b>	<b>134,694,099</b>	<b>30,589</b>	<b>\$47,965</b>	<b>12,884</b>	<b>2,296</b>	<b>17.8%</b>	<b>94,933,631</b>	<b>7,090,847</b>	<b>1,543</b>	<b>\$45,976</b>

**Notes:**  
 Degree recipients are included in only one student grouping and one graduation year based upon their highest degree awarded.  
 All income is from calendar year 2015.  
 Estimated Arizona state tax revenue assumes the following rates and income levels: <= \$25k = 12.6%; >\$25k and <=\$75k = 6.8%; >\$75k and <=\$100k = 7.2%; >\$100k = 6.9%.  
 \* Many of these students were working before graduating and/or worked for less than a year.

**EXECUTIVE SUMMARY**

**Northern Arizona University**

Year Graduated	Resident Graduates						Non-Resident Graduates							
	Resident Graduate Degrees Awarded	Number Employed in Arizona in 2015	Percent Employed in Arizona in 2015	Total Wages Earned 2015	Estimated AZ Total State Tax Revenue	Number Employed in Arizona During All 4 Quarters of 2015	Median Wage in 2015 of Those Employed All 4 Quarters of 2015	Non-Resident Graduate Degrees Awarded	Number Employed in Arizona in 2015	Percent Employed in Arizona in 2015	Total Wages Earned 2015	Estimated AZ Total State Tax Revenue	Number Employed in Arizona During All 4 Quarters of 2015	Median Wage in 2015 of Those Employed All 4 Quarters of 2015
1990	584	212	36.3%	\$11,106,694	\$793,769	165	\$60,000	152	23	15.1%	\$1,098,251	\$79,929	15	\$55,838
1991	661	231	35.0%	\$11,674,960	\$849,518	171	\$61,272	108	9	8.3%	\$731,331	\$52,376	9	\$80,601
1992	873	346	39.6%	\$18,699,516	\$1,338,590	267	\$62,958	117	19	16.2%	\$1,316,408	\$92,248	17	\$60,711
1993	889	357	40.2%	\$19,464,930	\$1,386,359	290	\$59,128	100	10	10.0%	\$599,093	\$42,994	7	\$57,064
1994	1,120	494	44.1%	\$27,326,300	\$1,944,229	368	\$63,075	95	9	9.5%	\$555,660	\$38,974	9	\$63,264
1995	1,326	631	47.6%	\$34,056,042	\$2,434,272	511	\$60,659	126	10	7.9%	\$718,653	\$50,037	8	\$82,853
1996	1,356	680	50.2%	\$36,770,531	\$2,607,212	552	\$59,858	99	10	10.1%	\$703,401	\$49,671	8	\$83,657
1997	1,583	835	52.8%	\$45,861,492	\$3,249,798	683	\$61,046	132	16	12.1%	\$1,074,884	\$75,855	13	\$60,850
1998	1,503	809	53.8%	\$45,033,178	\$3,191,340	656	\$60,538	149	12	8.1%	\$1,408,795	\$98,401	10	\$93,707
1999	1,835	1,052	57.3%	\$62,116,686	\$4,395,125	879	\$61,839	114	13	11.4%	\$1,069,528	\$76,066	12	\$68,690
2000	1,740	994	57.1%	\$59,423,943	\$4,200,635	851	\$61,261	160	14	8.8%	\$1,156,190	\$82,567	14	\$65,778
2001	1,776	1,110	62.5%	\$68,051,314	\$4,799,896	937	\$60,914	160	10	6.3%	\$1,053,948	\$73,292	10	\$79,160
2002	1,818	1,131	62.2%	\$66,909,372	\$4,724,928	970	\$59,460	152	13	8.6%	\$1,083,159	\$75,390	12	\$79,698
2003	1,852	1,173	63.3%	\$68,566,324	\$4,813,269	1,019	\$59,007	151	14	9.3%	\$1,007,352	\$71,697	12	\$64,420
2004	1,921	1,225	63.8%	\$69,525,083	\$4,884,345	1,047	\$56,841	197	22	11.2%	\$1,802,777	\$124,764	19	\$69,420
2005	1,816	1,156	63.7%	\$64,905,911	\$4,568,975	989	\$56,806	185	21	11.4%	\$1,173,637	\$85,093	16	\$56,654
2006	1,842	1,222	66.3%	\$68,375,396	\$4,796,796	1,075	\$55,716	168	28	16.7%	\$1,322,251	\$92,920	24	\$50,345
2007	1,661	1,130	68.0%	\$61,298,824	\$4,308,960	974	\$54,173	182	19	10.4%	\$742,245	\$54,908	15	\$48,115
2008	1,660	1,135	68.4%	\$60,129,520	\$4,230,245	971	\$53,315	191	29	15.2%	\$1,214,260	\$89,273	23	\$46,767
2009	1,638	1,113	68.0%	\$60,310,702	\$4,242,131	960	\$53,538	182	25	13.7%	\$999,998	\$72,479	19	\$52,718
2010	1,601	1,115	69.6%	\$59,711,910	\$4,200,434	966	\$51,758	182	28	15.4%	\$1,111,178	\$77,914	21	\$43,676
2011	1,580	1,108	70.1%	\$60,299,001	\$4,227,958	979	\$51,427	216	33	15.3%	\$1,416,872	\$100,122	26	\$47,124
2012	1,455	1,051	72.2%	\$57,113,796	\$4,015,012	914	\$53,388	198	32	16.2%	\$1,066,500	\$79,254	24	\$40,133
2013	1,285	965	75.1%	\$51,010,509	\$3,583,800	850	\$51,604	221	36	16.3%	\$1,065,770	\$83,734	25	\$35,290
2014	1,211	961	79.4%	\$50,157,957	\$3,548,972	819	\$52,375	237	49	20.7%	\$1,851,657	\$135,592	35	\$46,538
2015*	1,118	912	81.6%	\$39,023,698	\$2,863,538	658	\$47,208	231	93	40.3%	\$1,761,619	\$164,165	25	\$40,413
<b>TOTAL</b>	<b>37,704</b>	<b>23,148</b>	<b>61.4%</b>	<b>\$1,276,923,588</b>	<b>\$90,200,103</b>	<b>19,521</b>	<b>\$56,212</b>	<b>4,205</b>	<b>597</b>	<b>14.2%</b>	<b>\$29,105,414</b>	<b>\$2,119,714</b>	<b>428</b>	<b>\$52,942</b>

**Notes:**  
Degree recipients are included in only one student grouping and one graduation year based upon their highest degree awarded.  
All income is from calendar year 2015.  
Estimated Arizona state tax revenue assumes the following rates and income levels: <= \$25k = 12.6%; >\$25k and <=\$75k = 6.8%; >\$75k and <=\$100k = 7.2%; >\$100k = 6.9%.  
\* Many of these students were working before graduating and/or worked for less than a year.

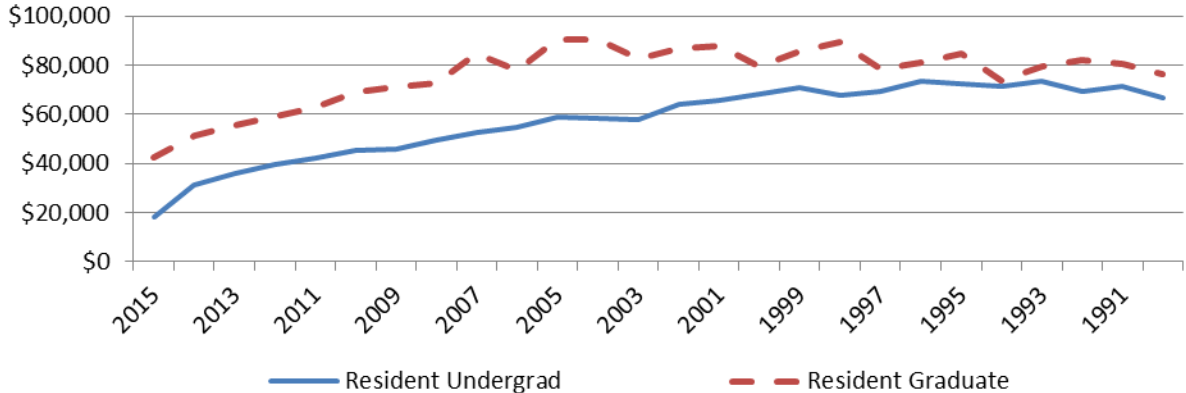


**EXECUTIVE SUMMARY**

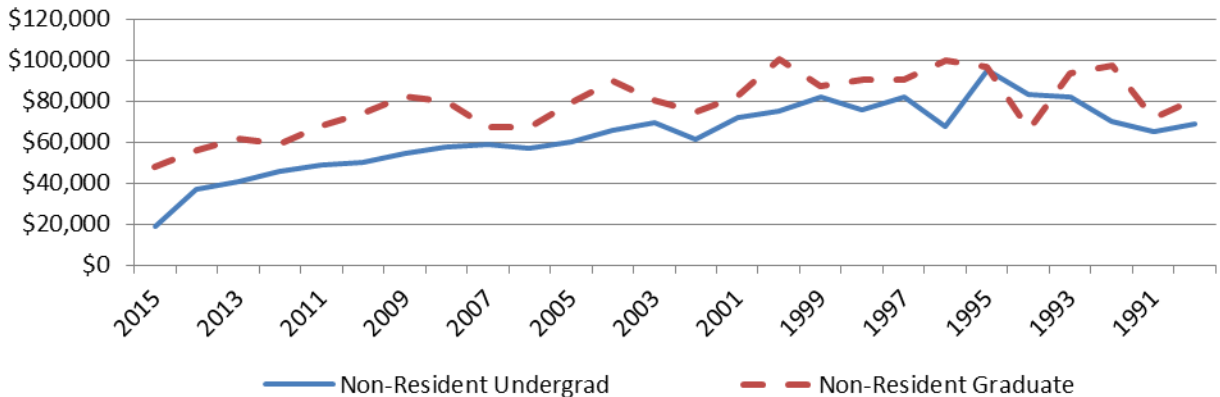
**Appendix – University of Arizona**

**EXECUTIVE SUMMARY**

### University of Arizona - Resident Student Wages in 2015 by Year of Graduation



### University of Arizona - Non-Resident Student Wages in 2015 by Year of Graduation



**EXECUTIVE SUMMARY****University of Arizona**

CIP Code Description	Bachelors		
	Degrees Awarded	Number Working in	Median Wages in
	<b>2011-2015</b>	<b>2015</b>	<b>2015</b>
Agriculture, and Related Sciences	522	301	\$39,334
Natural Resources and Conservation	328	173	\$31,424
Architecture and Related Services	616	227	\$39,989
Area, Ethnic, Cultural, and Gender Studies	268	146	\$26,198
Communication, Journalism, and Related Programs	1,484	576	\$33,681
Communications Technologies/Technicians & Support			
Computer and Information Sciences & Support Services	479	239	\$56,170
Personal and Culinary Services			
Education	1,520	1,100	\$36,556
Engineering	1,535	877	\$59,549
Engineering Technologies/Technicians	319	169	\$66,931
Foreign Languages, Literatures, and Linguistics	852	483	\$27,944
Family and Consumer Sciences/Human Sciences	823	487	\$30,124
Legal Professions and Studies			
English Language and Literatures/Letters	915	488	\$27,452
Liberal Arts and Sciences, General Studies & Humanities			
Library Science			
Biological and Biomedical Sciences	2,846	1,466	\$24,696
Mathematics and Statistics	288	121	\$41,843
ROTC			
Military Technologies			
Multi/Interdisciplinary Studies	1,780	804	\$29,946
Parks, Recreation, Leisure and Fitness Studies			
Philosophy and Religious Studies	329	163	\$29,317
Theology and Religious Vocations			
Physical Sciences	644	269	\$43,575
Science Technologies and Technicians	108	76	\$40,574
Psychology	2,393	1,372	\$30,540
Security and Protective Services	71	51	\$23,083
Public Administration and Social Service Professions	499	278	\$35,818
Social Sciences	2,758	1,248	\$31,916
Construction Trades			
Mechanic and Repair Technologies/Technicians			
Precision Production			
Transportation and Materials Moving			
Visual and Performing Arts	1,515	672	\$24,802
Health Professions and Related Clinical Sciences	1,786	1,053	\$32,620
Business, Management, Marketing, and Related Support	4,624	2,245	\$45,168
History	604	319	\$30,471
<b>University Total</b>	<b>29,916</b>	<b>15,404</b>	<b>\$33,910</b>

**Notes:**

Degree recipients may exist in more than one CIP group and career grouping if they earned degrees in multiple areas.

All income is from calendar year 2015.

Cells blackened indicate an N of less than 6.

**EXECUTIVE SUMMARY**

**University of Arizona**

CIP Code Description	Graduate		Median Wages in 2015
	Degrees Awarded 2011-2015	Number Working in 2015	
Agriculture, and Related Sciences	177	61	\$57,406
Natural Resources and Conservation	140	39	\$37,535
Architecture and Related Services	191	75	\$40,199
Area, Ethnic, Cultural, and Gender Studies	203	64	\$39,538
Communication, Journalism, and Related Programs	47	21	\$53,002
Communications Technologies/Technicians & Support			
Computer and Information Sciences & Support Services	470	118	\$72,799
Personal and Culinary Services			
Education	1,241	776	\$42,959
Engineering	773	284	\$85,758
Engineering Technologies/Technicians	35	19	\$59,973
Foreign Languages, Literatures, and Linguistics	273	89	\$39,839
Family and Consumer Sciences/Human Sciences	46	16	\$41,704
Legal Professions and Studies	735	391	\$59,358
English Language and Literatures/Letters	216	66	\$37,331
Liberal Arts and Sciences, General Studies & Humanities			
Library Science	460	262	\$39,348
Biological and Biomedical Sciences	465	131	\$59,466
Mathematics and Statistics	136	36	\$39,979
ROTC			
Military Technologies			
Multi/Interdisciplinary Studies	30	13	\$50,529
Parks, Recreation, Leisure and Fitness Studies			
Philosophy and Religious Studies	49	15	\$35,207
Theology and Religious Vocations			
Physical Sciences	829	182	\$77,655
Science Technologies and Technicians			
Psychology	237	103	\$46,928
Security and Protective Services			
Public Administration and Social Service Professions	170	97	\$45,831
Social Sciences	559	186	\$47,425
Construction Trades			
Mechanic and Repair Technologies/Technicians			
Precision Production			
Transportation and Materials Moving			
Visual and Performing Arts	370	100	\$31,463
Health Professions and Related Clinical Sciences	2,503	1,373	\$57,166
Business, Management, Marketing, and Related Support	1,089	605	\$80,403
History	63	26	\$23,175
<b>University Total</b>	<b>11,512</b>	<b>5,149</b>	<b>\$54,974</b>

**Notes:**

Degree recipients may exist in more than one CIP group and career grouping if they earned degrees in multiple areas.  
 All income is from calendar year 2015.  
 Cells blackened indicate an N of less than 6.

**EXECUTIVE SUMMARY**

**University of Arizona**

Year Graduated	Resident Undergraduates						Non-Resident Undergraduates							
	Resident Bachelor Degrees Awarded	Number Employed in Arizona in 2015	Percent Employed in Arizona in 2015	Total Wages Earned 2015	Estimated AZ Total State Tax Revenue	Number Employed in Arizona During All 4 Quarters of 2015	Median Wage in 2015 of Those Employed All 4 Quarters of 2015	Non-Resident Bachelor Degrees Awarded	Number Employed in Arizona in 2015	Percent Employed in Arizona in 2015	Total Wages Earned 2015	Estimated AZ Total State Tax Revenue	Number Employed in Arizona During All 4 Quarters of 2015	Median Wage in 2015 of Those Employed All 4 Quarters of 2015
1990	2,465	935	37.9%	\$73,958,751	\$5,211,208	809	\$66,788	971	9100.0%	9.4%	\$8,253,047	601,583	75	\$68,821
1991	2,670	1,025	38.4%	\$85,675,694	\$6,142,428	839	\$71,362	966	96	9.9%	\$8,200,976	\$626,407	77	\$64,838
1992	2,884	1,126	39.0%	\$96,968,158	\$7,134,194	941	\$69,378	1,228	87	7.1%	\$9,032,499	\$678,883	72	\$70,056
1993	3,008	1,171	38.9%	\$97,134,988	\$7,052,642	980	\$73,560	1,353	138	10.2%	\$13,752,874	\$1,024,644	119	\$82,000
1994	3,091	1,229	39.8%	\$102,384,310	\$7,408,171	1,020	\$71,425	1,172	102	8.7%	\$8,447,077	\$642,083	80	\$83,241
1995	3,167	1,346	42.5%	\$107,587,548	\$7,965,431	1,115	\$72,320	1,161	114	9.8%	\$12,106,342	\$913,149	92	\$95,419
1996	2,981	1,259	42.2%	\$99,279,367	\$7,332,448	1,018	\$73,422	1,182	120	10.2%	\$10,295,537	\$782,204	93	\$67,319
1997	3,015	1,277	42.4%	\$99,522,998	\$7,353,609	1,048	\$69,051	1,285	110	8.6%	\$7,499,116	\$593,963	83	\$82,197
1998	3,226	1,399	43.4%	\$102,178,588	\$7,564,566	1,143	\$67,800	1,553	138	8.9%	\$11,523,670	\$858,780	114	\$75,512
1999	3,058	1,370	44.8%	\$100,621,234	\$7,452,497	1,147	\$70,945	1,351	140	10.4%	\$12,541,834	\$923,335	116	\$81,889
2000	3,071	1,333	43.4%	\$95,501,029	\$7,120,449	1,096	\$68,301	1,347	131	9.7%	\$9,643,073	\$746,648	106	\$75,152
2001	3,130	1,447	46.2%	\$97,767,099	\$7,171,878	1,168	\$65,474	1,364	129	9.5%	\$9,262,197	\$706,941	104	\$72,001
2002	3,076	1,374	44.7%	\$92,129,160	\$6,757,600	1,095	\$64,033	1,415	143	10.1%	\$8,101,071	\$668,469	110	\$61,340
2003	3,225	1,448	44.9%	\$86,667,876	\$6,490,626	1,162	\$57,920	1,632	169	10.4%	\$11,786,855	\$876,673	140	\$69,191
2004	3,299	1,470	44.6%	\$88,724,975	\$6,282,925	1,177	\$58,500	1,513	129	8.5%	\$8,573,293	\$662,858	106	\$65,878
2005	3,552	1,392	39.2%	\$93,462,198	\$6,098,912	1,116	\$58,726	1,766	163	9.2%	\$9,987,145	\$764,237	130	\$59,937
2006	3,575	1,699	47.5%	\$86,733,391	\$6,746,502	1,373	\$54,723	1,612	208	12.9%	\$10,635,782	\$870,965	149	\$57,018
2007	3,445	1,738	50.4%	\$85,705,958	\$6,679,292	1,400	\$52,803	1,834	223	12.2%	\$12,605,376	\$964,539	185	\$58,998
2008	3,805	1,780	46.8%	\$80,769,048	\$6,330,795	1,415	\$49,521	1,630	248	15.2%	\$12,748,983	\$1,017,948	192	\$57,655
2009	4,128	1,894	45.9%	\$78,019,030	\$6,254,732	1,483	\$45,720	1,639	200	12.2%	\$10,225,675	\$805,105	154	\$54,179
2010	4,047	1,938	47.9%	\$74,528,793	\$6,059,704	1,529	\$45,440	1,609	184	11.4%	\$7,115,618	\$596,459	125	\$50,076
2011	4,337	2,403	55.4%	\$82,552,088	\$6,957,855	1,814	\$42,268	1,732	202	11.7%	\$7,932,977	\$636,031	150	\$48,634
2012	4,446	2,551	57.4%	\$78,619,764	\$6,885,976	1,912	\$39,462	1,905	297	15.6%	\$10,600,305	\$889,223	208	\$45,667
2013	4,522	2,555	56.5%	\$75,683,091	\$6,323,826	1,889	\$35,766	1,972	266	13.5%	\$7,629,411	\$694,270	176	\$40,645
2014	4,583	2,916	63.6%	\$39,963,253	\$6,380,973	2,093	\$31,003	1,787	345	19.3%	\$8,229,703	\$773,868	220	\$36,726
2015*	4,621	3,328	72.0%	\$209,892	\$4,841,228	1,564	\$17,958	1,962	541	27.6%	\$3,090,434	\$567,435	124	\$18,631
<b>TOTAL</b>	<b>90,427</b>	<b>43,403</b>	<b>48.0%</b>	<b>2,202,348,281</b>	<b>174,000,467</b>	<b>33,346</b>	<b>\$50,332</b>	<b>38,941</b>	<b>4,714</b>	<b>12.1%</b>	<b>249,820,870</b>	<b>19,886,700</b>	<b>3,300</b>	<b>\$55,746</b>

Notes:

**Degree recipients are included in only one student grouping and one graduation year based upon their highest degree awarded.**

All income is from calendar year 2015.

Estimated Arizona state tax revenue assumes the following rates and income levels: <= \$25k = 12.6%; >\$25k and <=\$75k = 6.8%; >\$75k and <=\$100k = 7.2%; >\$100k = 6.9%.

\* Many of these students were working before graduating and/or worked for less than a year.

**EXECUTIVE SUMMARY**

**University of Arizona**

Year Graduated	Resident Graduates						Non-Resident Graduates							
	Resident Graduate Degrees Awarded	Number Employed in Arizona in 2015	Percent Employed in Arizona in 2015	Total Wages Earned 2015	Estimated AZ Total State Tax Revenue	Number Employed in Arizona During All 4 Quarters of 2015	Median Wage in 2015 of Those Employed All 4 Quarters of 2015	Non-Resident Graduate Degrees Awarded	Number Employed in Arizona in 2015	Percent Employed in Arizona in 2015	Total Wages Earned 2015	Estimated AZ Total State Tax Revenue	Number Employed in Arizona During All 4 Quarters of 2015	Median Wage in 2015 of Those Employed All 4 Quarters of 2015
1990	918	301	32.8%	\$30,033,544	\$2,114,253	252	\$76,365	671	46	0	400154200.0%	\$282,107	\$40	\$80,901
1991	979	308	31.5%	\$29,829,315	\$2,079,106	249	\$80,629	563	55	0	316388200.0%	\$254,054	\$40	\$71,662
1992	1,024	335	32.7%	\$37,564,912	\$2,569,682	260	\$82,084	641	57	0	603686500.0%	\$439,597	\$51	\$97,189
1993	1,046	318	30.4%	\$30,914,958	\$2,249,394	244	\$79,408	628	47	0	406288600.0%	\$292,965	\$38	\$93,764
1994	1,102	375	34.0%	\$40,090,274	\$2,784,186	301	\$73,478	719	59	0	388806300.0%	\$294,681	\$47	\$65,854
1995	1,041	364	35.0%	\$37,618,574	\$2,507,690	278	\$84,605	728	55	0	443548100.0%	\$368,094	\$42	\$97,004
1996	1,095	398	36.3%	\$38,206,670	\$2,740,319	300	\$81,128	718	62	0	536005900.0%	\$393,524	\$49	\$99,642
1997	1,088	393	36.1%	\$36,280,723	\$2,666,269	297	\$78,533	783	49	0	365622100.0%	\$290,085	\$35	\$90,486
1998	986	369	37.4%	\$38,769,169	\$2,792,426	299	\$89,170	745	46	0	401070000.0%	\$292,741	\$36	\$90,577
1999	998	409	41.0%	\$45,810,584	\$2,954,007	332	\$85,683	792	77	0	883367200.0%	\$633,587	\$65	\$87,090
2000	919	348	37.9%	\$34,232,495	\$2,405,235	279	\$79,631	802	91	0	893163900.0%	\$654,192	\$76	\$100,742
2001	919	357	38.8%	\$35,557,494	\$2,555,688	293	\$87,797	757	81	0	794043800.0%	\$570,826	\$73	\$82,172
2002	920	349	37.9%	\$38,033,932	\$2,753,881	269	\$86,804	794	66	0	457598300.0%	\$336,638	\$56	\$74,667
2003	912	399	43.8%	\$38,694,502	\$2,659,560	313	\$82,685	870	87	0	640979400.0%	\$486,035	\$71	\$80,515
2004	1,024	398	38.9%	\$43,901,843	\$2,978,844	328	\$90,541	961	80	0	616729300.0%	\$457,831	\$69	\$89,705
2005	992	355	35.8%	\$41,521,414	\$2,465,306	284	\$90,434	965	63	0	456440300.0%	\$355,669	\$48	\$79,191
2006	1,047	505	48.2%	\$41,900,444	\$3,077,308	398	\$77,756	1,002	112	0	735940800.0%	\$558,977	\$87	\$67,357
2007	961	468	48.7%	\$40,525,487	\$3,030,517	375	\$84,477	1,191	197	0	1234999700.0%	\$1,004,234	\$154	\$67,357
2008	1,066	506	47.5%	\$37,598,991	\$2,950,326	407	\$72,544	1,103	194	0	1639517000.0%	\$1,210,857	\$159	\$79,546
2009	1,164	540	46.4%	\$38,547,151	\$2,973,404	445	\$71,042	1,140	180	0	1400137500.0%	\$1,084,916	\$138	\$82,049
2010	1,184	590	49.8%	\$39,949,785	\$3,088,221	476	\$69,065	1,041	194	0	1321843300.0%	\$979,353	\$161	\$74,335
2011	1,384	767	55.4%	\$46,327,806	\$3,599,462	602	\$62,515	1,059	197	0	1167698400.0%	\$909,378	\$140	\$67,903
2012	1,272	749	58.9%	\$43,319,969	\$3,292,731	611	\$59,359	1,152	243	0	1142038400.0%	\$934,194	\$163	\$59,180
2013	1,369	570	41.6%	\$31,354,501	\$2,405,365	459	\$55,210	1,283	274	0	1383882900.0%	\$1,075,633	\$188	\$61,951
2014	1,541	701	45.5%	\$22,585,136	\$2,642,889	516	\$51,332	1,209	315	0	1444466400.0%	\$1,160,138	\$209	\$56,223
2015*	1,556	1,009	64.8%	\$6,330,592	\$2,556,096	533	\$42,561	1,199	324	0	674822400.0%	\$725,019	\$98	\$48,181
<b>TOTAL</b>	<b>28,507</b>	<b>12,181</b>	<b>42.7%</b>	<b>945,500,265</b>	<b>70,892,165</b>	<b>9,400</b>	<b>\$69,961</b>	<b>23,516</b>	<b>3,251</b>	<b>13.8%</b>	<b>207,492,389</b>	<b>16,045,325</b>	<b>2,333</b>	<b>\$71,531</b>

**Notes:**

Degree recipients are included in only one student grouping and one graduation year based upon their highest degree awarded.

All income is from calendar year 2015.

Estimated Arizona state tax revenue assumes the following rates and income levels: <= \$25k = 12.6%; >\$25k and <=\$75k = 6.8%; >\$75k and <=\$100k = 7.2%; >\$100k = 6.9%.

\* Many of these students were working before graduating and/or worked for less than a year.