

FISCAL YEAR 2020

POSTSECONDARY ATTAINMENT REPORT





ABOUT THIS REPORT

The Arizona Board of Regents Postsecondary Attainment Report examines the number and proportion of Arizona public high school graduates who enroll in postsecondary institutions within one year of graduation, as well as the number and proportion that complete a postsecondary credential within six years of graduation.

Data in this report uses graduation records from Arizona public high schools provided by the Arizona Department of Education, and postsecondary enrollment and completion records for these graduates from the National Student Clearinghouse.

This year's report restates data from the report's inception to correct irregularities that were identified in the records of Arizona public high school graduates provided by the Arizona Department of Education. To address these anomalies, the Arizona Department of Education recommended and applied an algorithm to uniquely assign high school graduates to a single graduation year, high school, gender and race. Students whose graduation records could not be disambiguated by this algorithm are reported as having graduated from an "unknown" high school.

The Arizona Board of Regents provides this report to inform the state's understanding of postsecondary enrollment and completion trends and the educational attainment challenges and opportunities in Arizona.

ABOUT THE ARIZONA BOARD OF REGENTS

The Arizona Board of Regents is committed to ensuring access for qualified residents of Arizona to undergraduate and graduate institutions; promoting the discovery, application and dissemination of new knowledge; extending the benefits of university activities to Arizona's citizens outside the university; and maximizing the benefits derived from the state's investment in education.

MEMBERS

Larry Penley, Chair
Lyndel Manson, Chair Elect
Karrin Taylor Robson, Secretary
Ron Shoopman, Treasurer
Bill Ridenour
Fred DuVal
Kathryn Hackett King
Cecilia Mata
Anthony Rusk, Student Regent
Nikhil Dave, Student Regent
Gov. Doug Ducey, Ex-Officio
Superintendent Kathy Hoffman, Ex-Officio

ABOR EXECUTIVE DIRECTOR

John Arnold



TABLE OF CONTENTS

- 1** Takeaways
- 4** Executive Summary
- 7** Postsecondary Enrollments within One Year After Graduation
- 8** Four-Year College Enrollments Within One Year After Graduation
- 9** Top Postsecondary Institutions by 2018 High School Graduate Enrollments
- 10** Top Ten Percent of Arizona High Schools Ranked by 2018 Enrollment Rate at Four-Year Colleges
- 11** 2018 Graduates and Four-Year College Enrollment Rate Based on High School Tiers
- 12** 2018 Graduates by Race Ethnicity and High School Tier
- 13** Number of Graduates Enrolled at Four-Year Colleges by Gender and Race Ethnicity
- 14** Percentage of Graduates Enrolled at Four-Year Colleges by Gender and Race Ethnicity
- 15** Postsecondary Completions Within Six Years After Graduation
- 16** Bachelor's Degree Completion Within Six Years After Graduation
- 17** Top Postsecondary Institutions by 2013 High School Graduate Completions
- 18** Top Ten Percent of Arizona Public High Schools Ranked by 2013 Six Year Completion Rate of Bachelor's Degrees
- 19** 2013 Graduates and Bachelor's Degree Completions Within Six Years by High School Tier
- 20** 2013 Graduates by Race Ethnicity and High School Tier
- 21** Number of Graduates Completing Bachelor's Degrees Within Six Years of Graduation by Gender and Race Ethnicity
- 22** Percentage of Graduates Completing Bachelor's Degrees Within Six Years of Graduation by Gender and Race Ethnicity



TAKEAWAYS

The information in this report denotes the following:

- Approximately half of Arizona's 2018 high school graduates pursued education beyond high school.
- Approximately 29 percent of Arizona's 2018 high school graduates pursued a four-year degree. According to the American Community Survey and Arizona state demographer, this is less than the number of estimated bachelor's degree holders who will be aging out of the workforce.
- Arizona public universities enrolled roughly 68 percent of Arizona high school graduates that chose a four-year degree program.
- Where students went to high school impacts whether they enrolled in and completed a four-year degree.
- The number of Black, Hispanic and Native American high school graduates enrolled in a four-year degree program continues to increase.
- Year-over-year, the percent of high school graduates enrolling in a four-year college held steady or slightly increased, but the enrollment gap continues between Black, Hispanic and Native American high school graduates and White or Asian high school graduates.
- Although a college completion gap persists, the percentage of degree completers improved among all racial and ethnic groups.
- Arizona female high school graduates enrolled and completed college at much higher rates than their male counterparts.

EDUCATIONAL ATTAINMENT IS ONE OF ARIZONA'S GRAND CHALLENGES

Creating a College Going Culture is One of Arizona's Grand Challenges

Arizona's level of education attainment – the percentage of adults who earn a two- or four-year degree – trails the national average. According to the most recent census, Arizona's educational attainment rate is 38.9 percent, compared to the national average of 41.7 percent.¹ Closing the gap between Arizona and the national average requires more Arizona high school graduates to attend and complete a four-year degree. But, in terms of educational attainment, Arizona remains in many ways a state divided. Rates of college attendance and completion are uneven across geographic, racial and socioeconomic lines.

Arizona is home to some of the nation's top-performing high schools² in which most students after graduation pursue a college or university degree. Yet, in some communities – especially rural, tribal and sections of the urban core – few students pursue a postsecondary education. Lack of educational attainment is a primary limiting factor not only on individual prosperity, but also the economy of entire communities and Arizona as a whole.

In 2018, nearly half – 47.3 percent – of Arizona's high school graduating class did not enroll in a two- or four-year college after graduation, a rate that has remained steady over the past several years. This substantially lags the national average. Based on current available data, nationally the immediate college enrollment rate for high school completers in 2018 was 69.1 percent.³ Among the 2013 high school graduates' cohort, 29.3 percent completed a two- or four-year degree program after high school (exhibit PC.1.).

Compounding the low college going and college completion rates is Arizona's corresponding low high school completion rate, which ranks in the bottom quartile of the United States. This means that if Arizona's high school completion, college enrollment and completion trends stay on their current trajectory, only 18.5 percent of today's ninth graders will graduate from a four-year college by 2029. Current Arizona workforce attainment rate is 33.8 percent of individuals with a bachelor's degrees or higher and the national average workforce attainment rate of individuals with bachelor's degree or higher is 38.9 percent.⁴

These college-going and completion rates highlight problematic questions for Arizona: Why are more Arizona students not enrolling in and completing college, especially four-year degree programs? And, what can be done to improve it?

Arizona's Public Universities Are Striving to Meet this Challenge

Identifying ways to improve attainment within Arizona and among its communities and socioeconomic groups is a board priority. Over the past two years, Arizona's public university system engaged in a number of initiatives and partnerships aimed at addressing this challenge.

¹ U.S. Census Data from American Community Survey table S1501 (2019).

² U.S. News and World Report, Best High Schools in Arizona, 2020. Retrieved September 20, 2020, from https://www.usnews.com/education/best-high-schools/national-rankings?int=top_nav_National_Rankings

³ National Center for Education Statistics. (2020, April). The condition of education. Retrieved September 21, 2020, from https://nces.ed.gov/programs/coe/indicator_cpa.asp

⁴ See generally US Census data Table B23006 located at <https://data.census.gov/cedsci/advanced>

Those initiatives include:

- Partnering with the Governor to create and establish the Arizona Teachers Academy to address teacher shortages;
- Launching the New Economy Initiative to garner legislative support for four-year degree attainment;
- ASU Digital Preparatory Academy's partnership with dozens of Arizona high schools to provide better access to curriculum and great instructors;
- Improvement of existing and development of new external relationships to promote the value of higher education;
- Entered into data sharing agreements with the Arizona Department of Education and the community colleges to better understand student persistence;
- Set-aside of funding for a plan to further study K-12 student preparedness for higher education;
- Development and dissemination of research reports on the worth of a college degree, including the Graduate Wages Report;
- In partnership with Achieve60AZ, the Arizona Commission for Postsecondary Education and College Success AZ, ASU developed Benji – an Artificial Intelligence technology with an open bot platform to help students and families get answers to their FAFSA questions instantly and complete the FAFSA as quickly and easily as possible;
- A new partnership with the U.S. Census to expand college graduate outcome reporting; and
- Pursuit of multiple public engagement initiatives, including launch of the Regents' Cup.

Through these and other efforts, ABOR and Arizona's public universities are making strides to develop a stronger college-going culture in our state.

EXECUTIVE SUMMARY

Fifty-Two Percent of Arizona's High School Graduates Go on to College

Arizona is not moving the needle fast enough on high school graduates going to college. Among the approximately 72,000 high school students who graduated in 2018, nearly half – 34,000 – did not enroll in a postsecondary education institution (exhibit PE.1.). A smaller percentage of high school graduates chose to enroll in college in 2018 than in 2009, indicating a troubling trend. Educational attainment is a primary factor that impacts the quality of Arizona's labor market and our ability to compete regionally and nationally for high-paying employers and jobs.

Arizona's college-going rate is relatively static and will likely be impacted by the pandemic in the near future. In 2018, the enrollment rate was 52.7 percent, a decline from 2017, and the current pandemic may cause the enrollment rate to decline further next year (exhibit PE.1.).

Although the overall rate of enrollment in higher education decreased, the rate of high school graduates enrolling in four-year institutions remained steady at 28.6 percent in 2018. That means, of those students choosing to go to college during the past couple of years, a greater percentage have elected to attend a four-year institution (exhibit PE.1.). There are several possible reasons for this enrollment shift, including the value proposition of a four-year degree compared to a two-year degree, and increased availability of financial aid that has brought a university education within reach of more Arizonans.

Where You Go to High School Matters

The college enrollment data sheds light on Arizona high schools' inconsistent performance in preparing students for higher education. The top Arizona high schools educate 60.8 percent of high school graduates and produce 82 percent of those who subsequently enroll in a four-year college (exhibit PE.5).

The report divides Arizona public high schools into tiers based on their graduates' college enrollment. The grouping is done by separating the Arizona high schools into 10 tiers, with each tier representing 10 percent of Arizona public high schools. The top 10 percent of high schools with the highest four-year college enrollment rates are placed in the first tier, and so on, until schools with the lowest four-year college enrollment rates are placed into tier 10.

Unsurprisingly, the charts show that graduates from high schools in the top-performing tiers have a much greater chance of enrolling in a four-year college relative to students who graduate from schools in the lower tiers. Graduates from the top tier of high schools have a 67.7 percent college enrollment rate, while graduates from schools in tier five have an 18.9 percent college enrollment rate. Graduates from schools in the lowest performing tier have a zero percent college enrollment rate (exhibit PE.5). Addressing the enrollment disparities among high schools is a strategic imperative for Arizona.

Arizona is not Producing Enough Four-Year Degrees Per High School Graduating Class

Among students who pursued a college or university education, enrollment trends are almost evenly split between two- and four-year schools (exhibit PE.1.). The 28.6 percent of Arizona high school

graduates choosing to attend a four-year program is insufficient to replace the number of college degree-holders forecast to retire in the coming years. Unless Arizona rapidly improves its educational attainment, our state will be forced to continue relying upon in-migration from other states to fill positions that require a four-year degree.⁵

Most Arizona High School Graduates Who Pursue a Four-Year Degree Do So at an Arizona Public University

Arizona's public universities educate most of Arizona high school graduates who seek a four-year degree. More than two-thirds – 68.4 percent of Arizona high school graduates who seek a four-year degree choose to enroll in an Arizona public university (exhibit PE.3).

Arizona Graduates from Historically Underrepresented Populations Enroll at Lower Rates Than Their Peers, but Progress is Being Made Across All Race and Ethnic Groups

College enrollment rates among Hispanic and Native American high school graduates increased between 2014 and 2018, while the rate of Black high school graduates who went on to attend college fell slightly. These demographic groups that have been historically underrepresented in college continue to lag the enrollment rates of their white and Asian peers (exhibit PE.8).

In 2018, college enrollment rates among Hispanic graduates improved 2.3 percentage points relative to five years earlier (exhibit PE.8). Native American high school graduates' enrollment increased 1.2 percent points in that same timeframe (exhibit PE.8). The percentage of Black high school graduates who enrolled in college has remained nearly flat over the last five years, while Asian and white high school graduates' enrollment rates rose (exhibit PE.8). Given existing demographic trends, Arizona must find solutions to close this college enrollment gap if it hopes to improve its overall attainment.

Females Outpace Males in Enrollment

Female high school graduates continue to outpace males in enrollment in four-year institutions. In 2018, females comprised 59.7 percent of four-year college enrollments (exhibit PE.7).

Moreover, female enrollment trends continue to improve, while male enrollment rates have stagnated for the past five years (exhibit PE.7).

Arizona's High Schools Graduates Four-year College Completions Trends Continue to Improve

Just as the college enrollment rate has remained flat for the past two years, college completion rates for the most recent cohort also are essentially flat. Among the 2013 class of high school graduates, over 22.4 percent completed a four-year degree. That was a slight improvement over the 2012 class, which had a college completion rate of 21.3 percent and a significant improvement from the 2005 graduating class's 17.3 percent completion rate (exhibit PC.1.).

Where a Graduate Attends High School Impact Her Chances of Completing a Four-Year Degree

Four-year college completion trends further highlight the differentiated performance among Arizona high schools. For college completions, the top 30 percent of Arizona high schools educate 58.6 percent

⁵ See U.S. Census Data from American Community Survey table S1501, (2019), stating Arizona residents ages 65+ make up 27.2 percent of all Arizona degrees Bachelor for ages 25+.

of Arizona high school graduates and produce 82.3 percent of the high school graduates who go on to complete a four-year degree (exhibit PC.5). Generally, Arizona's college preparatory charter schools and a few public high schools in affluent areas produce higher rates of four-year degree earners.

The Percentage of Degree Completers Improved Among All Racial and Ethnic Groups

Over the past five years, high school graduates of Asian descent experienced the most improvement in their rate of college completion. However, four-year degree completion rates for all racial and ethnic groups showed improvement (exhibit PC.8).

While college completion rates improved for most racial and ethnic groups, differentiated outcomes persist between the historically underrepresented population of Black, Hispanic and Native American graduates relative to their Asian and white peers (exhibit PC.8). The completion gap has shrunk since 2005, but a Native American high school graduate still only has a 7.7 percent chance of completing a four-year degree. A Hispanic graduate has a 13.4 percent chance, and a Black graduate has a 17.0 percent chance. By comparison, high school graduates of Asian descent who attend college have a 47.4 percent chance of completing their degree, and white students have a 29.9 percent chance (exhibit PC. 8). Improvement in the area of college completion is vital because students of color comprise a majority and fast-growing segment of Arizona's K-12 system.⁶

Arizona Female High School Graduates are Completing College at a Much Higher Rate than Male High School Graduates

More women are completing college and at much higher rates than their male counterparts. Females represent 60.5 percent of four-year college completions (exhibit PC.7). Among the 2013 Arizona cohort, 26.5 percent of female high school graduates completed a four-year degree within six years, as compared to 18.2 percent of their male peers (exhibit PC.8).

Moreover, the number of Arizona females who attend a postsecondary institution after high school continues to increase. Between the high school graduating class of 2009 and 2013, the number of women earning a four-year degree increased 4.2 percentage points. During that same period, Arizona men saw a 2.6 percentage point growth in four-year degrees completed (exhibit PC.8).

⁶ See Arizona Minority Education Policy Analysis Center's 2018 Arizona Minority Student Progress report, <https://highered.az.gov/sites/default/files/AMEPAC%202018%20Report.pdf>.

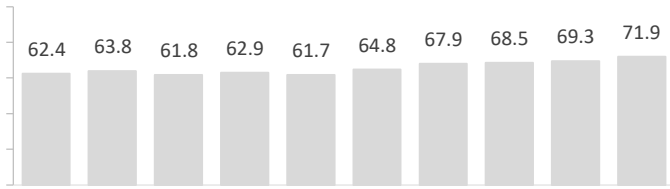
Arizona Public High School Graduates

Exhibit PE.1: Postsecondary Enrollments Within One Year After Graduation

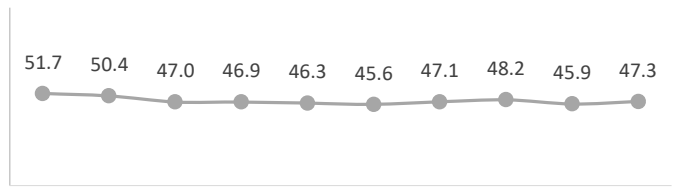
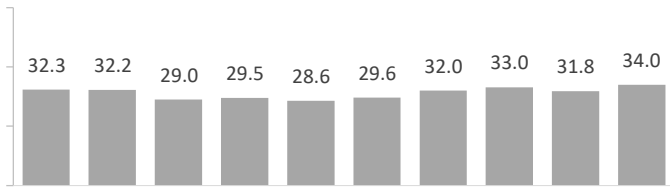
Number of Graduates (in Thousands)

Percentage of Graduates

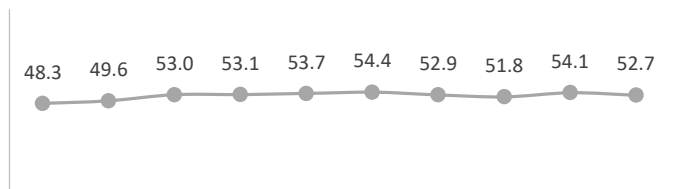
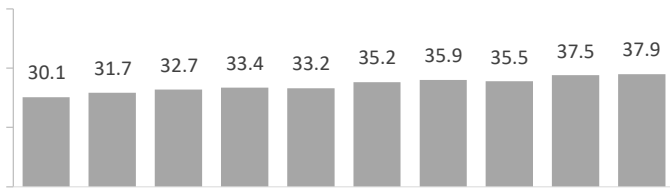
Arizona Public High Graduates



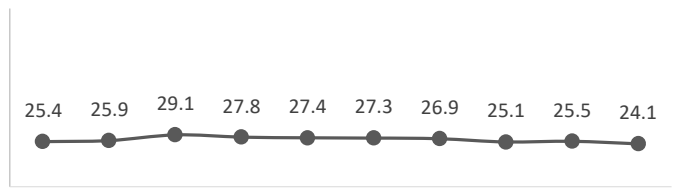
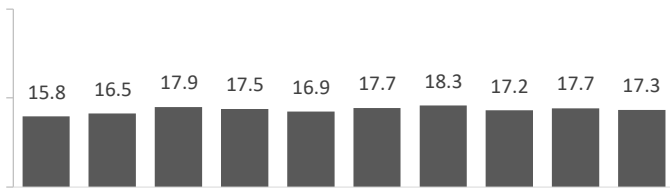
Arizona Public High School Graduates With No Postsecondary Enrollment



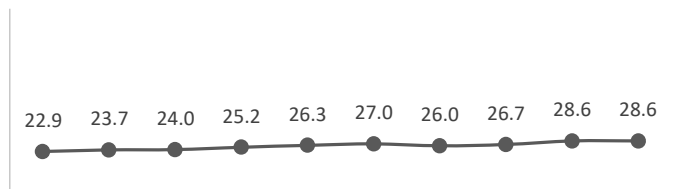
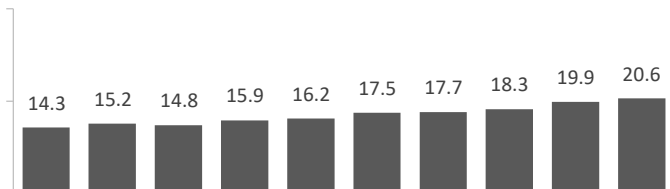
Arizona Public High School Graduates With Any Postsecondary Enrollment



Arizona Public High School Graduates Enrolled at Two Year Colleges or Other Postsecondary Institution



Arizona Public High School Graduates Enrolled at Four Year Colleges



2009

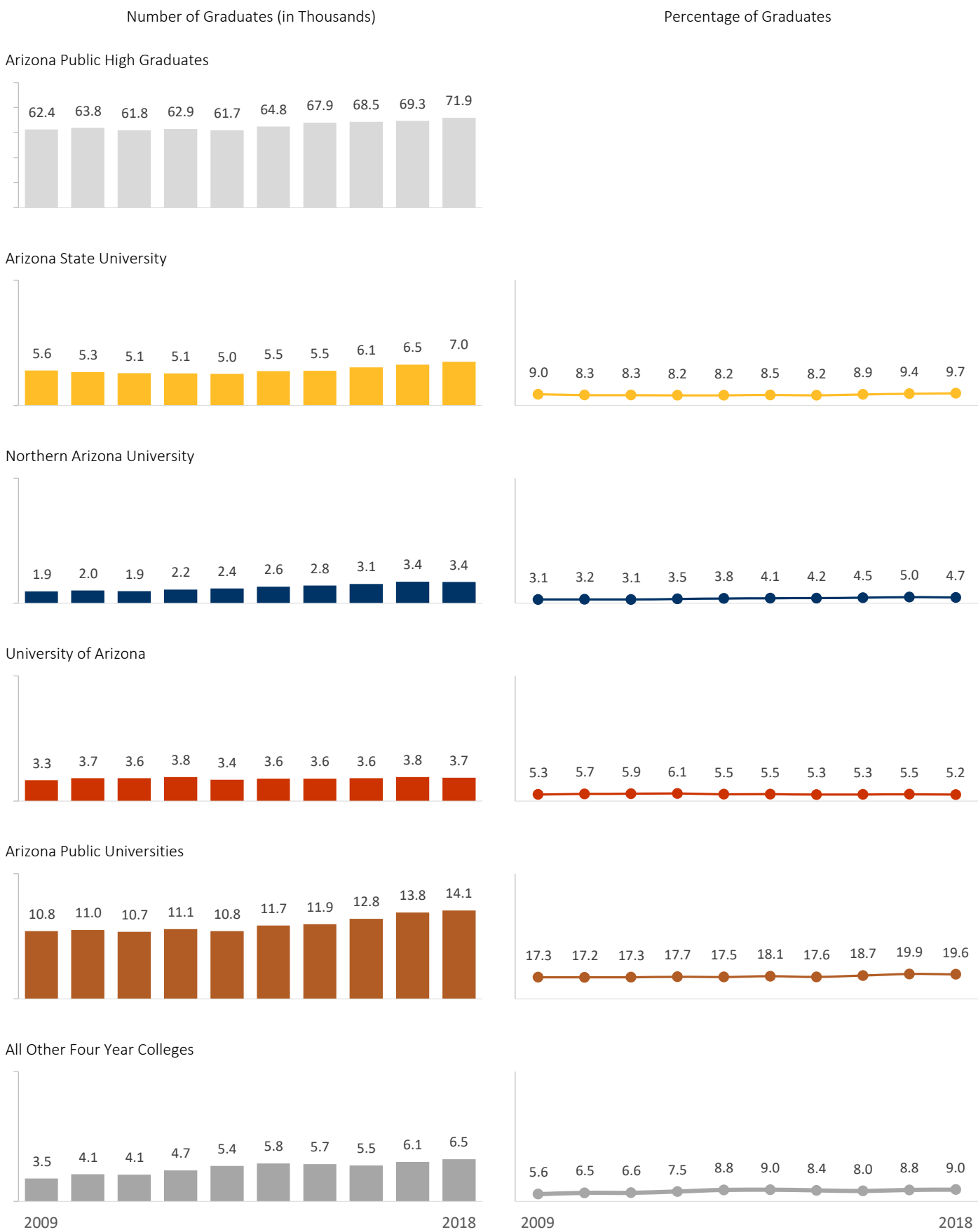
2018

2009

2018

Arizona Public High School Graduates

Exhibit PE.2: Four-Year College Enrollments Within One Year After Graduation



Arizona Public High School Graduates

Exhibit PE.3: Top Twenty Postsecondary Institutions by 2018 High School Graduate Enrollments

Top Twenty Two-Year Colleges

2 Year Colleges	Enrollments	
Pima Community College	2,216	3.08%
Glendale Community College	1,932	2.69%
Mesa Community College	1,786	2.49%
Chandler-Gilbert Community College	1,442	2.01%
Estrella Mountain Community College	1,370	1.91%
Arizona Western College	1,187	1.65%
Central Arizona College	924	1.29%
Phoenix College	898	1.25%
Paradise Valley Community College	741	1.03%
Scottsdale Community College	541	0.75%
Eastern Arizona College	527	0.73%
Yavapai College	525	0.73%
South Mountain Community College	431	0.60%
Cochise County Community College District	421	0.59%
GateWay Community College	333	0.46%
Mohave Community College	321	0.45%
Coconino Community College	301	0.42%
Rio Salado College	266	0.37%
Northland Pioneer College	198	0.28%
Carrington College-Phoenix North	126	0.18%
Other	826	1.15%
Total	17,312	24.09%

Top Twenty Four-Year Colleges

4 Year Colleges	Enrollments	
Arizona State University	6,996	9.74%
University of Arizona	3,730	5.19%
Northern Arizona University	3,385	4.71%
Grand Canyon University	1,734	2.41%
Brigham Young University	253	0.35%
Brigham Young University - Idaho	187	0.26%
Dine College	121	0.17%
Embry-Riddle Aeronautical University	121	0.17%
Ottawa University - Ottawa	101	0.14%
Utah Valley University	81	0.11%
Utah State University	71	0.10%
College America - Phoenix	60	0.08%
Benedictine University	59	0.08%
New Mexico State University	57	0.08%
Fort Lewis College	55	0.08%
Arizona Christian University	52	0.07%
University of Utah	51	0.07%
Colorado State University	50	0.07%
Navajo Technical University	46	0.06%
Dixie State University	45	0.06%
Other	3,419	4.76%
Total	20,583	28.77%

Arizona Public High School Graduates

Exhibit PE.4: Top Ten Percent of Arizona Public High Schools Ranked by 2018 One Year Enrollment Rate at Four-Year Colleges

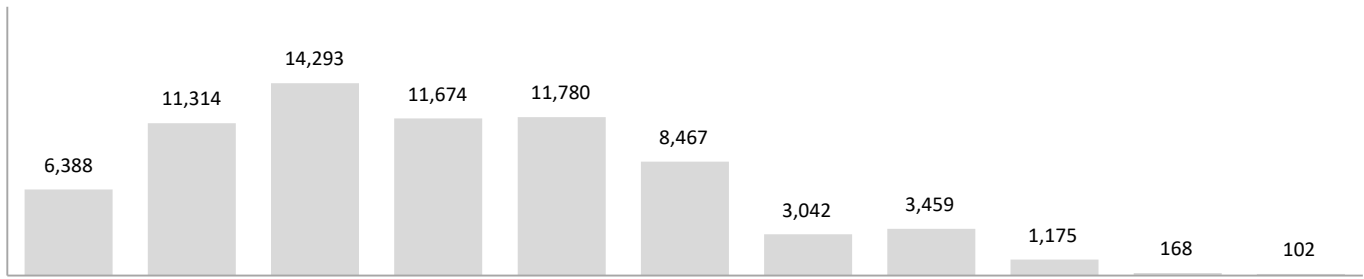
High School	Grads	Enrollments	One Year Postsecondary Enrollment Rate
Accelerated Learning Laboratory	10	10	100.0%
BASIS Prescott	14	13	92.9%
Paragon Science Academy	13	12	92.3%
BASIS Oro Valley	49	45	91.8%
BASIS Chandler	84	77	91.7%
BASIS Flagstaff	34	31	91.2%
BASIS Mesa	11	10	90.9%
BASIS Phoenix	59	53	89.8%
BASIS Scottsdale	68	61	89.7%
Arizona College Prep Erie Campus	96	86	89.6%
BASIS Peoria	42	37	88.1%
BASIS Tucson North	65	57	87.7%
Gilbert Classical Academy High School	71	60	84.5%
University High School	356	298	83.7%
Great Hearts Academies - Anthem Prep	55	46	83.6%
Phoenix Union Bioscience High School	57	47	82.5%
Arizona School For The Arts	85	70	82.4%
BASIS Ahwatukee	28	23	82.1%
Great Hearts Academies - Scottsdale Prep	71	58	81.7%
Tempe Preparatory Academy	47	38	80.9%
Great Hearts Academies - Arete Prep	55	44	80.0%
Northland Preparatory Academy	80	62	77.5%
Great Hearts Academies - Chandler Prep	77	59	76.6%
Great Hearts Academies - Trivium Prep	33	25	75.8%
Great Hearts Academies - Glendale Prep	48	36	75.0%
Great Hearts Academies - North Phoenix Prep	23	17	73.9%
Tri-City College Prep High School	44	31	70.5%
Catalina Foothills High School	363	254	70.0%
Great Hearts Academies - Veritas Prep	74	51	68.9%
ASU Preparatory Academy-Polytechnic High School	57	39	68.4%
Chaparral High School	486	327	67.3%
Arizona Agribusiness & Equine Center - Estrella	105	69	65.7%
Foothills Academy	29	19	65.5%
Desert Mountain High School	495	315	63.6%
Arizona Agribusiness & Equine Center Inc. - Red Mountain	27	17	63.0%
Pinnacle High School	567	356	62.8%
Desert Vista High School	689	427	62.0%
Presidio School	10	6	60.0%
Cactus Shadows High School	410	242	59.0%
Phoenix College Preparatory Academy	33	19	57.6%
Horizon High School	407	233	57.2%
Corona Del Sol High School	643	368	57.2%
Horizon Honors Secondary School	88	49	55.7%
Sonoran Science Academy - Tucson	38	21	55.3%
ASU Preparatory Academy- Phoenix High School	88	48	54.5%
Sonoran Science Academy - Davis Monthan	15	8	53.3%
Sonoran Science Academy - Phoenix	21	11	52.4%
Metropolitan Arts Institute	50	26	52.0%

Copper Point High School	Redacted
Peoria eCampus	Redacted
The Rising School	Redacted
TIA East	Redacted

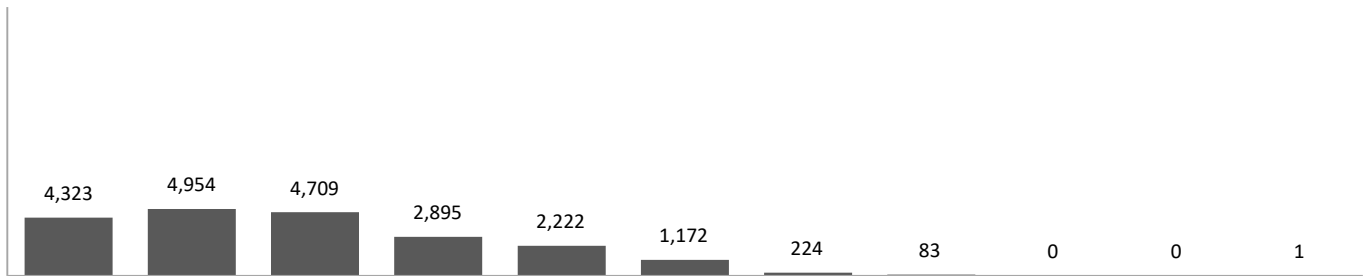
Arizona Public High School Graduates

Exhibit PE.5: 2018 Graduates and Four Year College Enrollments by Enrollment-Rate Based High School Tiers

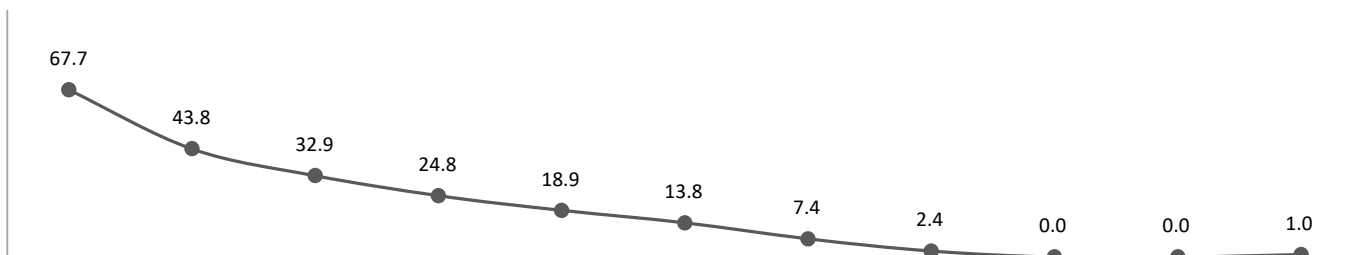
Graduates by High School Tier



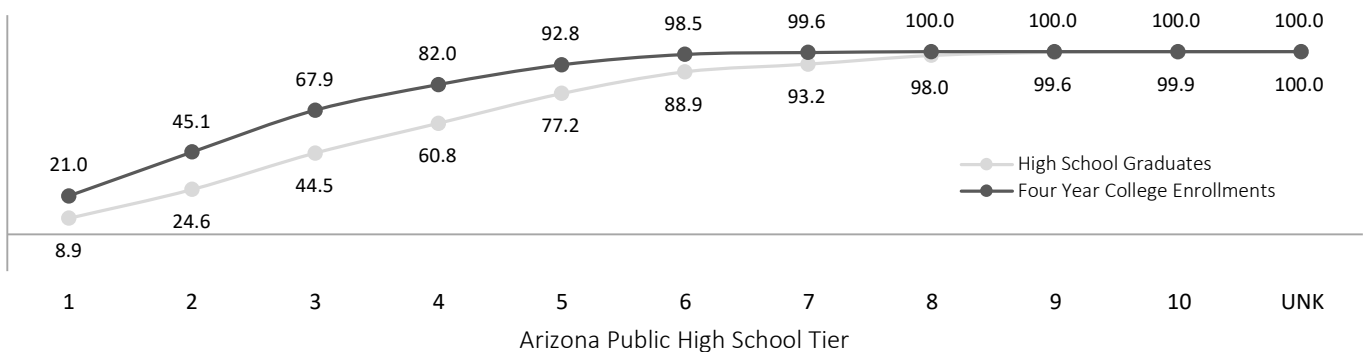
Graduates Enrolled at Four-Year Colleges by High School Tier



Percentage of Graduates Enrolled at Four-Year Colleges by High School Tier



Cumulative Percentage of Graduates and Four-Year College Enrollments by High School Tier



Note: Arizona public high schools are ranked based on (1) their four-year college enrollment rates and (2) their number of graduates, and are binned into equally sized tiers containing 10 percent of all high schools. Tier one represents the 10 percent of high schools with the highest four-year college enrollment rates. The UNK grouping includes all Arizona public high school graduates whose high school is unknown.

Arizona Public High School Graduates

Exhibit PE.6: 2018 Graduates by Race Ethnicity and High School Tier

Number of Graduates by Race and Ethnic Group and High School Tier

Tier	Asian	Black	Hispanic	Native American	White	Other	Total
1	1107	1,451	10,174	696	12,631	809	26,868
2	524	1,176	10,415	312	7,215	606	20,248
3	229	561	4,670	903	4,515	413	11,291
4	173	209	1,835	528	2,188	172	5,105
5	79	191	1,400	92	1,293	104	3,159
6	61	95	841	197	797	72	2,063
7	29	40	544	87	553	41	1,294
8	12	31	195	58	264	23	583
9	3	35	654	97	170	22	981
10	1	11	70	13	68	5	168
Unknown	1	17	32	4	39	9	102
Total	2,219	3,817	30,830	2,987	29,733	2,276	71,862

Percentage of Graduates by Race and Ethnic Group within High School Tier

Tier	Asian	Black	Hispanic	Native American	White	Other	Total
1	4.1%	5.4%	37.9%	2.6%	47.0%	3.0%	100%
2	2.6%	5.8%	51.4%	1.5%	35.6%	3.0%	100%
3	2.0%	5.0%	41.4%	8.0%	40.0%	3.7%	100%
4	3.4%	4.1%	35.9%	10.3%	42.9%	3.4%	100%
5	2.5%	6.0%	44.3%	2.9%	40.9%	3.3%	100%
6	3.0%	4.6%	40.8%	9.5%	38.6%	3.5%	100%
7	2.2%	3.1%	42.0%	6.7%	42.7%	3.2%	100%
8	2.1%	5.3%	33.4%	9.9%	45.3%	3.9%	100%
9	0.3%	3.6%	66.7%	9.9%	17.3%	2.2%	100%
10	0.6%	6.5%	41.7%	7.7%	40.5%	3.0%	100%
Unknown	1.0%	16.7%	31.4%	3.9%	38.2%	8.8%	100%

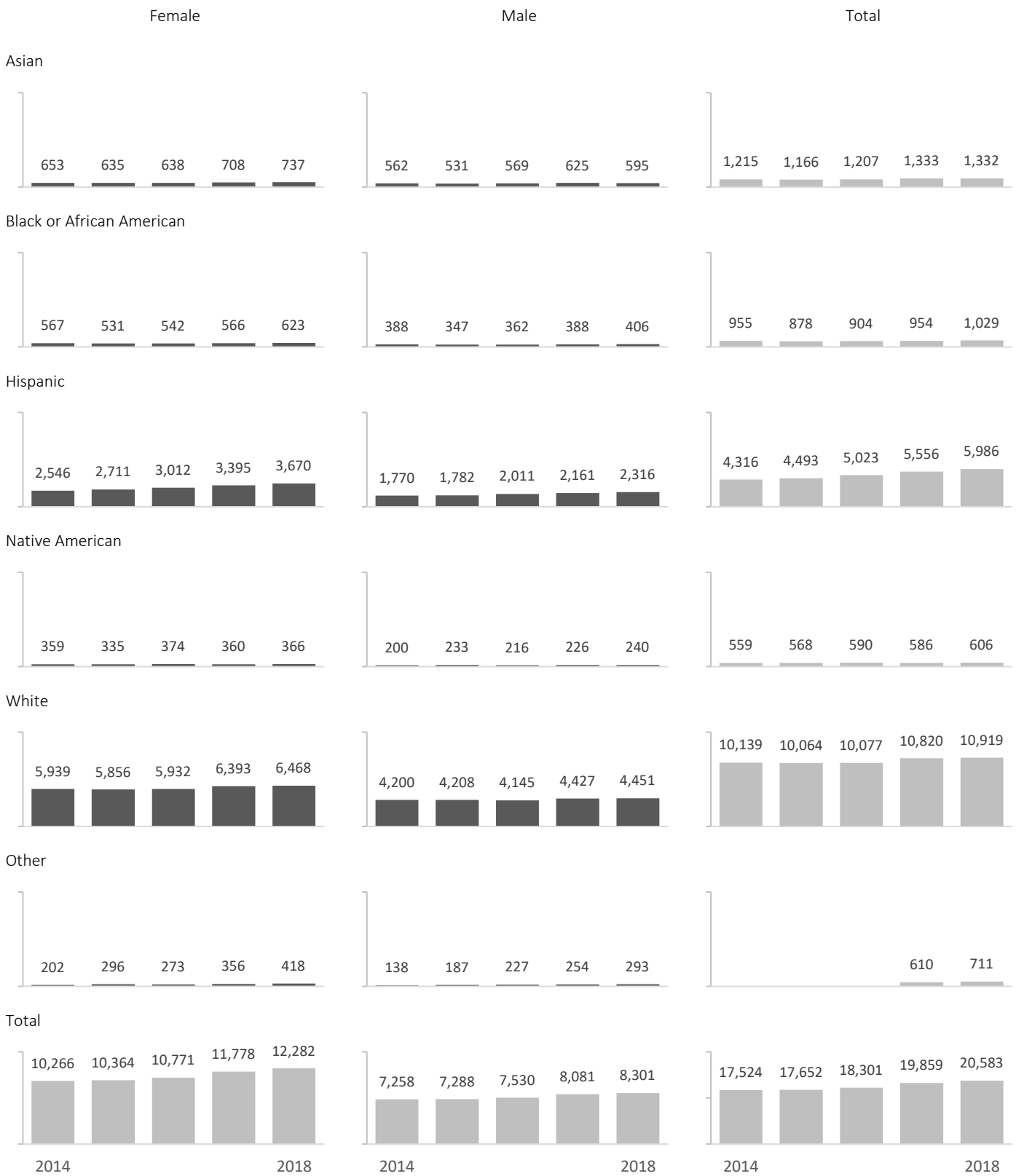
Percentage of Graduates within Race and Ethnic Group by High School Tier

Tier	Asian	Black	Hispanic	Native American	White	Other
1	49.9%	38.0%	33.0%	23.3%	42.5%	35.5%
2	23.6%	30.8%	33.8%	10.4%	24.3%	26.6%
3	10.3%	14.7%	15.1%	30.2%	15.2%	18.1%
4	7.8%	5.5%	6.0%	17.7%	7.4%	7.6%
5	3.6%	5.0%	4.5%	3.1%	4.3%	4.6%
6	2.7%	2.5%	2.7%	6.6%	2.7%	3.2%
7	1.3%	1.0%	1.8%	2.9%	1.9%	1.8%
8	0.5%	0.8%	0.6%	1.9%	0.9%	1.0%
9	0.1%	0.9%	2.1%	3.2%	0.6%	1.0%
10	0.0%	0.3%	0.2%	0.4%	0.2%	0.2%
Unknown	0.0%	0.4%	0.1%	0.1%	0.1%	0.4%
Total	100%	100%	100%	100%	100%	100%

Note: Arizona public high schools are ranked based on (1) their four-year college completion rates and (2) their number of graduates, and are binned into equally sized tiers containing 10 percent of all high schools. Tier one represents the 10 percent of high schools with the highest four-year college completion rates. The UNK grouping includes all Arizona public high school graduates whose high school is unknown. The "Other" race and ethnicity grouping includes Multiracial, Native Hawaiian and other Pacific Islanders and graduates whose race and ethnicity is unknown.

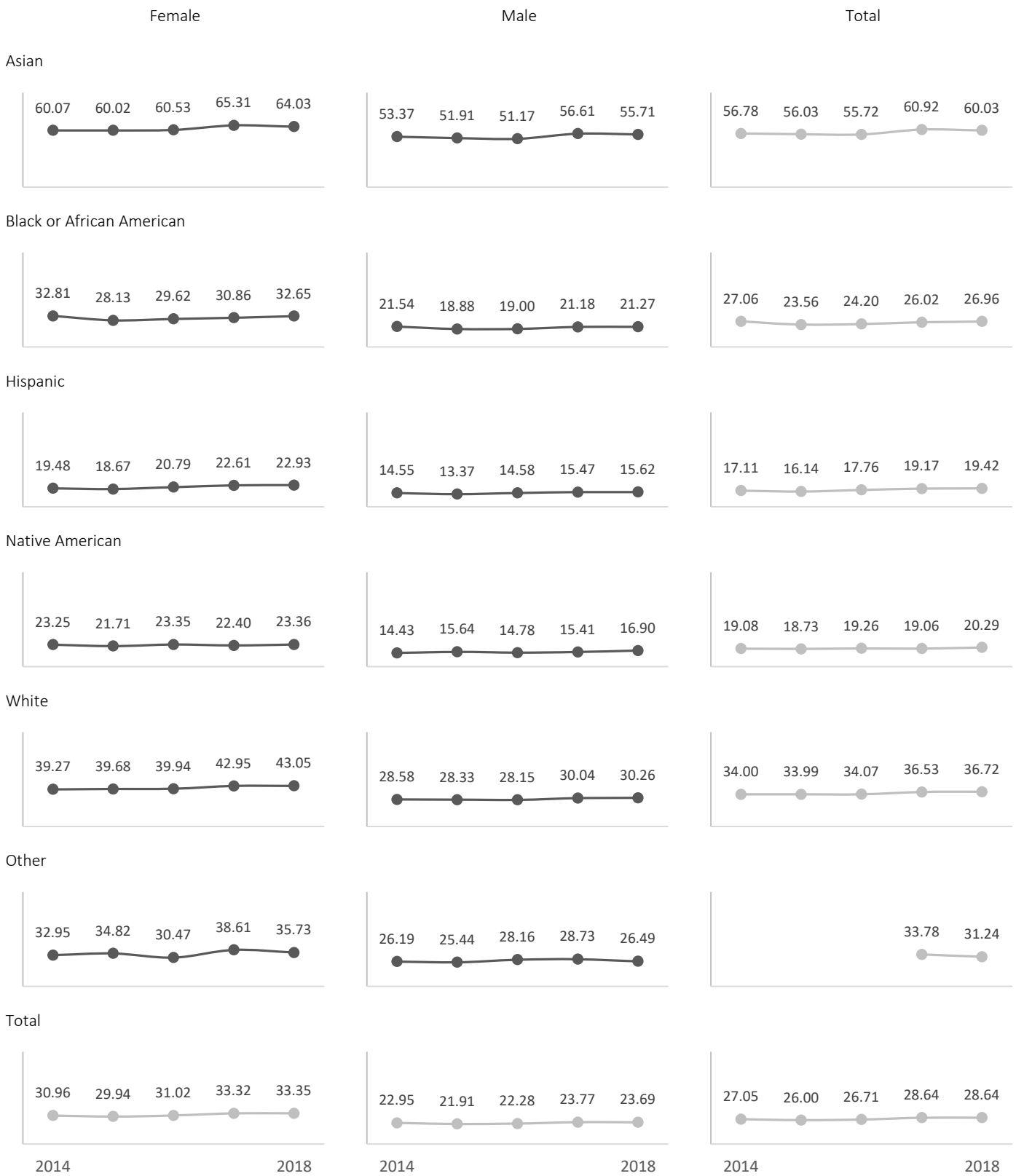
Arizona Public High School Graduates

Exhibit PE.7: Number of Graduates Enrolled at Four-Year Colleges by Gender and Race Ethnicity



Arizona Public High School Graduates

Exhibit PE.8: Percentage of Graduates Enrolled at Four-Year Colleges by Gender and Race Ethnicity



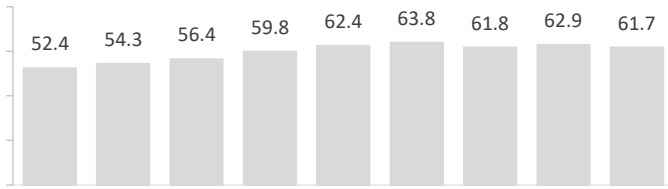
Arizona Public High School Graduates

Exhibit PC.1: Postsecondary Completions Within Six Year After Graduation

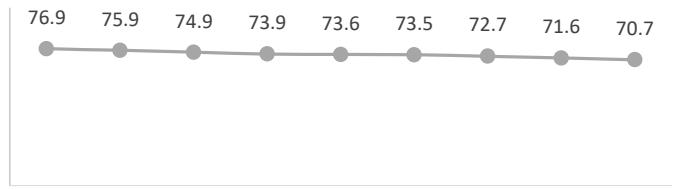
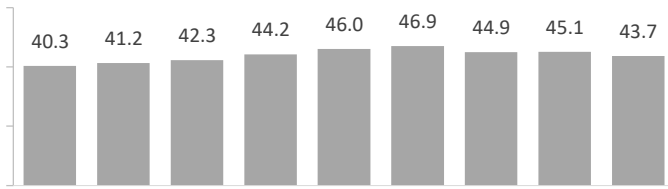
Number of Graduates (in Thousands)

Percentage of Graduates

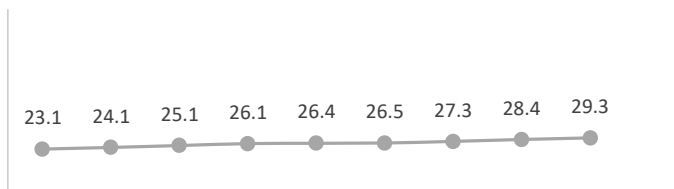
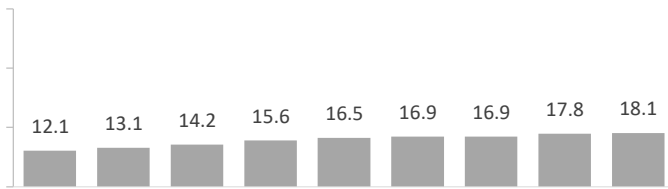
Arizona Public High Graduates



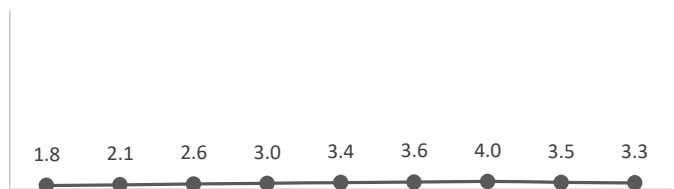
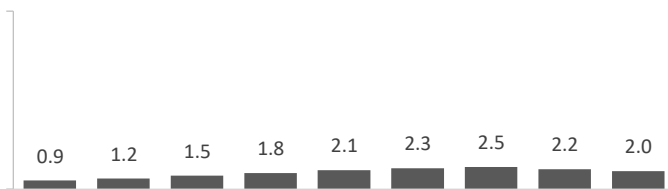
Arizona Public High School Graduates With No Postsecondary Completion



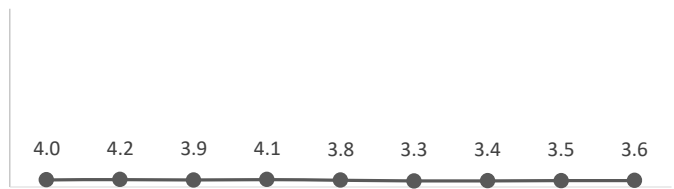
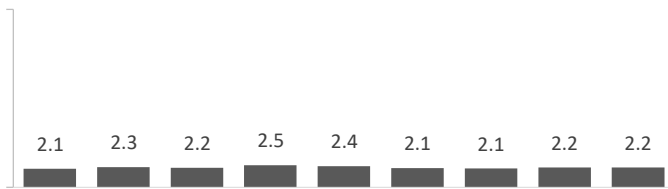
Arizona Public High School Graduates With Any Postsecondary Completion



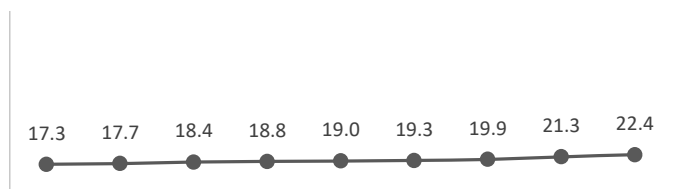
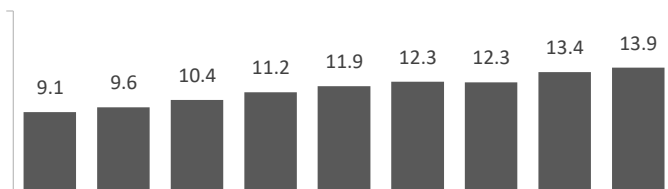
Arizona Public High School Graduates Completing Certificate or Credential



Arizona Public High School Graduates Completing Associate's Degree



Arizona Public High School Graduates Completing Bachelor's Degree or Higher



2005

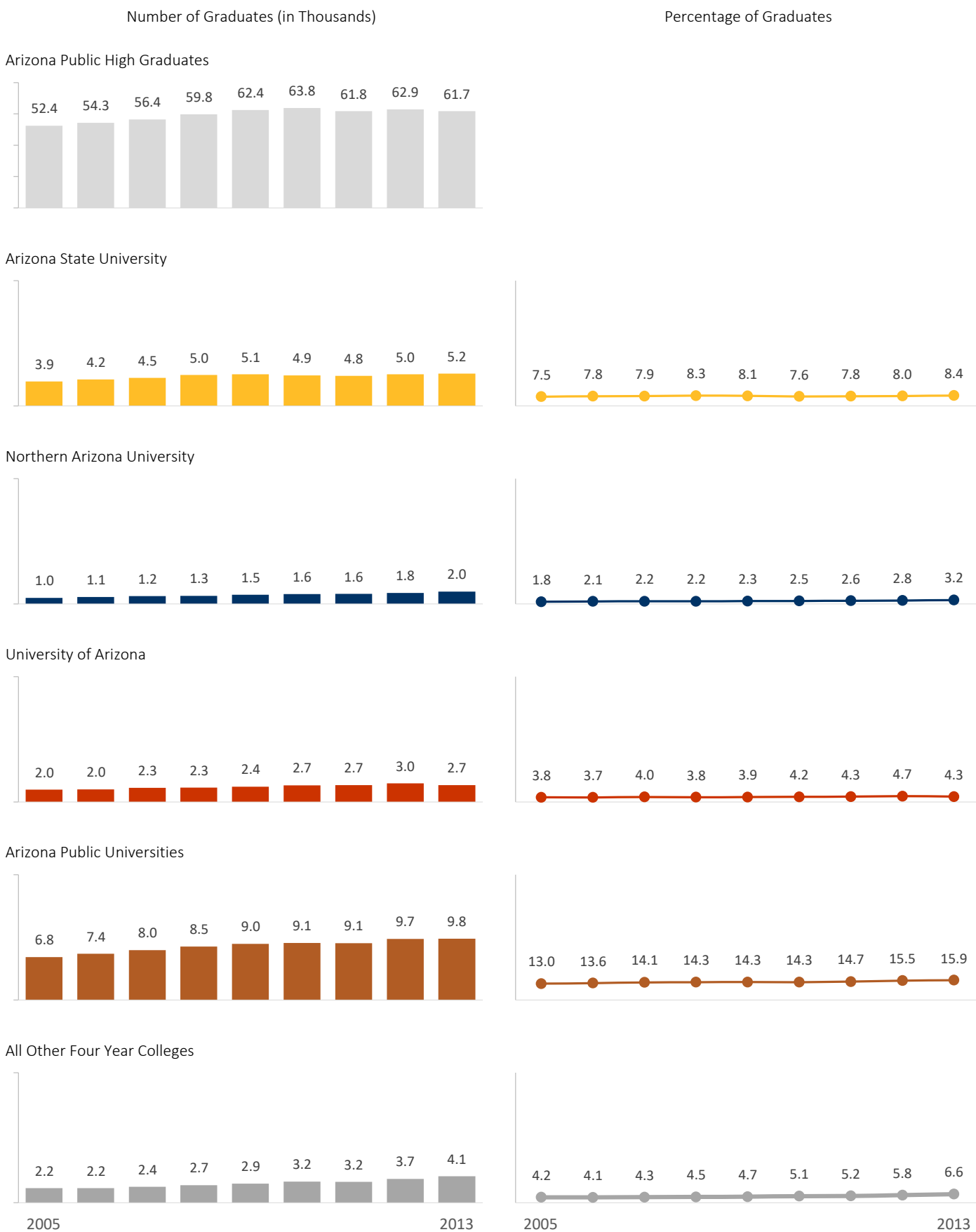
2013

2005

2013

Arizona Public High School Graduates

Exhibit PC.2: Bachelor's Degree Completions Within Six Years After Graduation



Arizona Public High School Graduates

Exhibit PC.3: Top Postsecondary Institutions by 2013 High School Graduate Completions

Top Ten Postsecondary Institutions by Certificates and Credentials Completions

Postsecondary Institution	Completions	
Carrington College-Phoenix North	207	0.34% ■
Glendale Community College	180	0.29% ■
Pima Community College	166	0.27% ■
Carrington College-Mesa	144	0.23% ■
Rio Salado College	128	0.21% ■
Carrington College-Tucson	118	0.19% ■
Chandler-Gilbert Community College	98	0.16% ■
Mesa Community College	89	0.14% ■
GateWay Community College	78	0.13% ■
Estrella Mountain Community College	70	0.11% ■
Other	714	1.16%
Total	1,992	3.23%

Top Ten Postsecondary Institutions by Associate's Degrees Completions

Postsecondary Institution	Completions	
Pima Community College	299	0.48% ■
Arizona Western College	203	0.33% ■
Central Arizona College	135	0.22% ■
Mesa Community College	124	0.20% ■
Glendale Community College	119	0.19% ■
Eastern Arizona College	115	0.19% ■
Chandler-Gilbert Community College	92	0.15% ■
Cochise County Community College District	91	0.15% ■
Phoenix College	80	0.13% ■
Yavapai College	80	0.13% ■
Other	877	1.42%
Total	2,215	3.59%

Top Twenty Postsecondary Institutions by Bachelor's Degree Completions

Postsecondary Institution	Completions	
Arizona State University	5,164	8.36% ■
The University of Arizona	2,668	4.32% ■
Northern Arizona University	1,961	3.18% ■
Grand Canyon University	978	1.58% ■
Brigham Young University	164	0.27% ■
Brigham Young University - Idaho	79	0.13% ■
Embry-Riddle Aeronautical University	52	0.08% ■
College America - Phoenix	48	0.08% ■
New Mexico State University	41	0.07% ■
Benedictine University	40	0.06% ■
Colorado State University	36	0.06% ■
Everest College - Phoenix	27	0.04% ■
Chamberlain College of Nursing - Illinois	27	0.04% ■
University of California - Los Angeles	27	0.04% ■
University of Southern California	27	0.04% ■
Utah State University	27	0.04% ■
University of Alabama	26	0.04% ■
DeVry University - Illinois	26	0.04% ■
University of California - San Diego	25	0.04% ■
Fort Lewis College	25	0.04% ■
Other	2,437	3.95%
Total	13,855	22.52%

Arizona Public High School Graduates

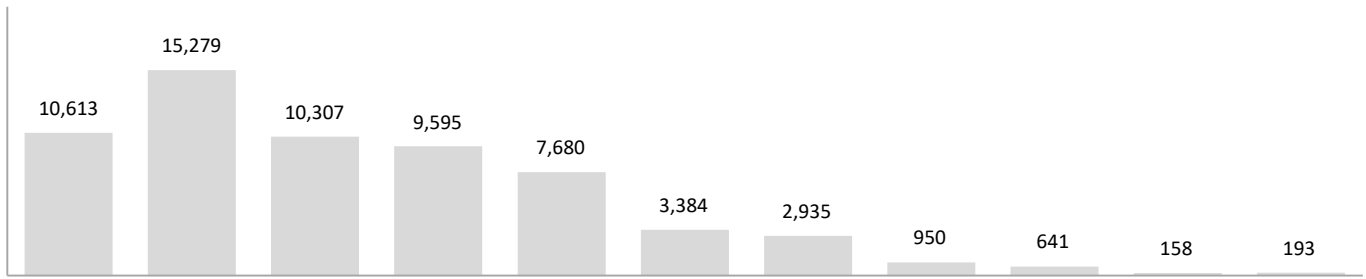
Exhibit PC.4: Top Ten Percent of Arizona Public High Schools Ranked by 2013 Six-Year Completion Rate of Bachelor's Degrees

High School	Grads	Completions	Six Year Bachelor's Degree Completion Rate
Great Hearts Academies - Scottsdale Prep	32	25	78.1%
BASIS Scottsdale	36	28	77.8%
Great Hearts Academies - Chandler Prep	67	51	76.1%
Gilbert Classical Academy High School	36	27	75.0%
Tempe Preparatory Academy	54	40	74.1%
BASIS Oro Valley	13	9	69.2%
Great Hearts Academies - Arete Prep	16	11	68.8%
University High School	287	196	68.3%
Catalina Foothills High School	343	224	65.3%
Chaparral High School	454	291	64.1%
Great Hearts Academies - Glendale Prep	30	19	63.3%
BASIS Tucson North	54	34	63.0%
Great Hearts Academies - Veritas Prep	46	28	60.9%
Horizon Honors Secondary School	90	54	60.0%
Desert Vista High School	649	388	59.8%
Northland Preparatory Academy	63	36	57.1%
Desert Mountain High School	527	301	57.1%
Arizona School For The Arts	54	30	55.6%
Arizona College Prep Erie Campus	11	6	54.5%
Phoenix Union Bioscience High School	58	30	51.7%
Cactus Shadows High School	394	197	50.0%
Mountain Pointe High School	461	228	49.5%
Pinnacle High School	643	313	48.7%
Horizon High School	461	224	48.6%
Corona Del Sol High School	542	261	48.2%
Flagstaff Arts And Leadership Academy	44	21	47.7%
Tri-City College Prep High School	44	21	47.7%
Ironwood Ridge High School	443	203	45.8%
Foothills Academy	33	15	45.5%
Mountain Ridge High School	522	237	45.4%
James Madison Preparatory School	27	12	44.4%
Arcadia High School	399	177	44.4%
Hamilton High School	814	347	42.6%
Sabino High School	263	112	42.6%
Arizona Agribusiness & Equine Center - Estrella	22	9	40.9%
Sonoran Science Academy - Tucson	57	23	40.4%
Campo Verde High School	421	168	39.9%
Perry High School	509	193	37.9%
AAEC - Paradise Valley	66	25	37.9%
Tanque Verde High School	102	38	37.3%
Canyon Del Oro High School	380	138	36.3%
Basha High School	582	211	36.3%
Saguaro High School	268	96	35.8%
Fountain Hills High School	162	58	35.8%
Academy of Math and Science	Redacted		
Accelerated Learning Laboratory	Redacted		
Bowie High School	Redacted		
Desert Marigold School	Redacted		
Scottsdale Online Learning	Redacted		

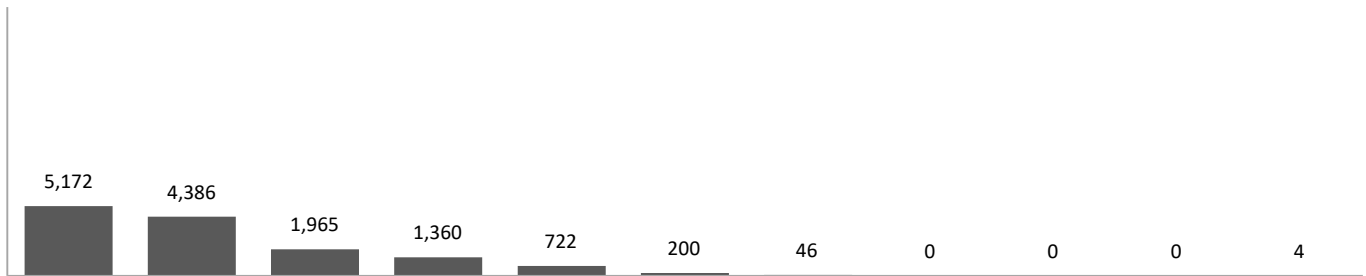
Arizona Public High School Graduates

Exhibit PC.5: 2013 Graduates and Bachelor's Degree Completions within Six Years by High School Tier

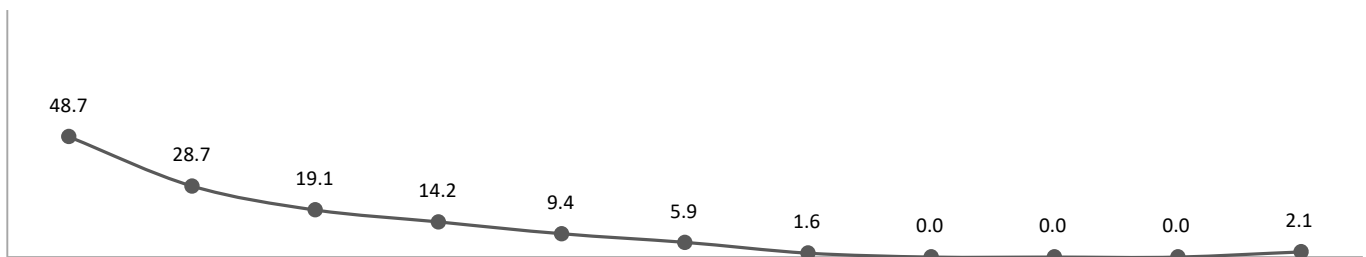
Graduates by High School Tier



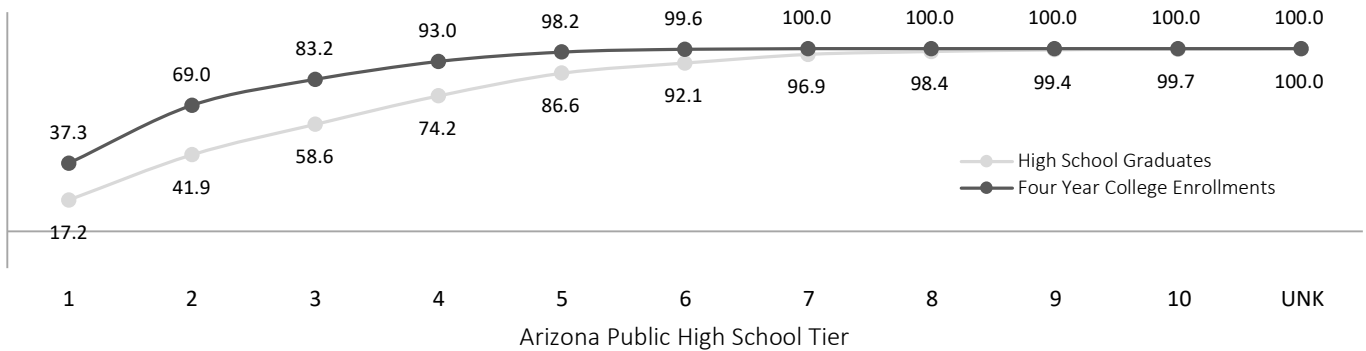
Graduate Bachelor's Degree Completions by High School Tier



Percentage Graduates Completing Bachelor's Degree by High School Tier



Cumulative Percentage of Graduates and Bachelor's Degree Completions by High School Tier



Note: Arizona public high schools are ranked based on (1) their bachelor's degree completion rates and (2) their number of graduates, and are binned into equally sized tiers containing 10 percent of all high schools. Tier one represents the 10 percent of high schools with the highest bachelor's degree completion rates. The UNK grouping includes all Arizona public high school graduates whose high school is unknown.

Arizona Public High School Graduates

Exhibit PC.6: 2013 Graduates by Race Ethnicity and High School Tier

Number of Graduates by Race and Ethnic Group and High School Tier

Tier	Asian	Black	Hispanic	Native American	White	Other	Total
1	745	461	1,591	112	7,591	113	10,613
2	613	685	3,942	328	9,395	316	15,279
3	295	554	4,106	203	4,950	199	10,307
4	270	688	4,962	248	3,321	106	9,595
5	142	436	4,974	709	1,331	88	7,680
6	34	184	1,085	781	1,233	67	3,384
7	25	215	1,819	192	643	41	2,935
8	4	34	411	106	375	20	950
9	5	33	297	53	241	12	641
10	3	4	65	32	52	2	158
Unknown	3	20	100	8	54	8	193
Total	2,139	3,314	23,352	2,772	29,186	972	61,735

Percentage of Graduates by Race and Ethnic Group within High School Tier

Tier	Asian	Black	Hispanic	Native American	White	Other	Total
1	7.0%	4.3%	15.0%	1.1%	71.5%	1.1%	100%
2	4.0%	4.5%	25.8%	2.1%	61.5%	2.1%	100%
3	2.9%	5.4%	39.8%	2.0%	48.0%	1.9%	100%
4	2.8%	7.2%	51.7%	2.6%	34.6%	1.1%	100%
5	1.8%	5.7%	64.8%	9.2%	17.3%	1.1%	100%
6	1.0%	5.4%	32.1%	23.1%	36.4%	2.0%	100%
7	0.9%	7.3%	62.0%	6.5%	21.9%	1.4%	100%
8	0.4%	3.6%	43.3%	11.2%	39.5%	2.1%	100%
9	0.8%	5.1%	46.3%	8.3%	37.6%	1.9%	100%
10	1.9%	2.5%	41.1%	20.3%	32.9%	1.3%	100%
Unknown	1.6%	10.4%	51.8%	4.1%	28.0%	4.1%	100%

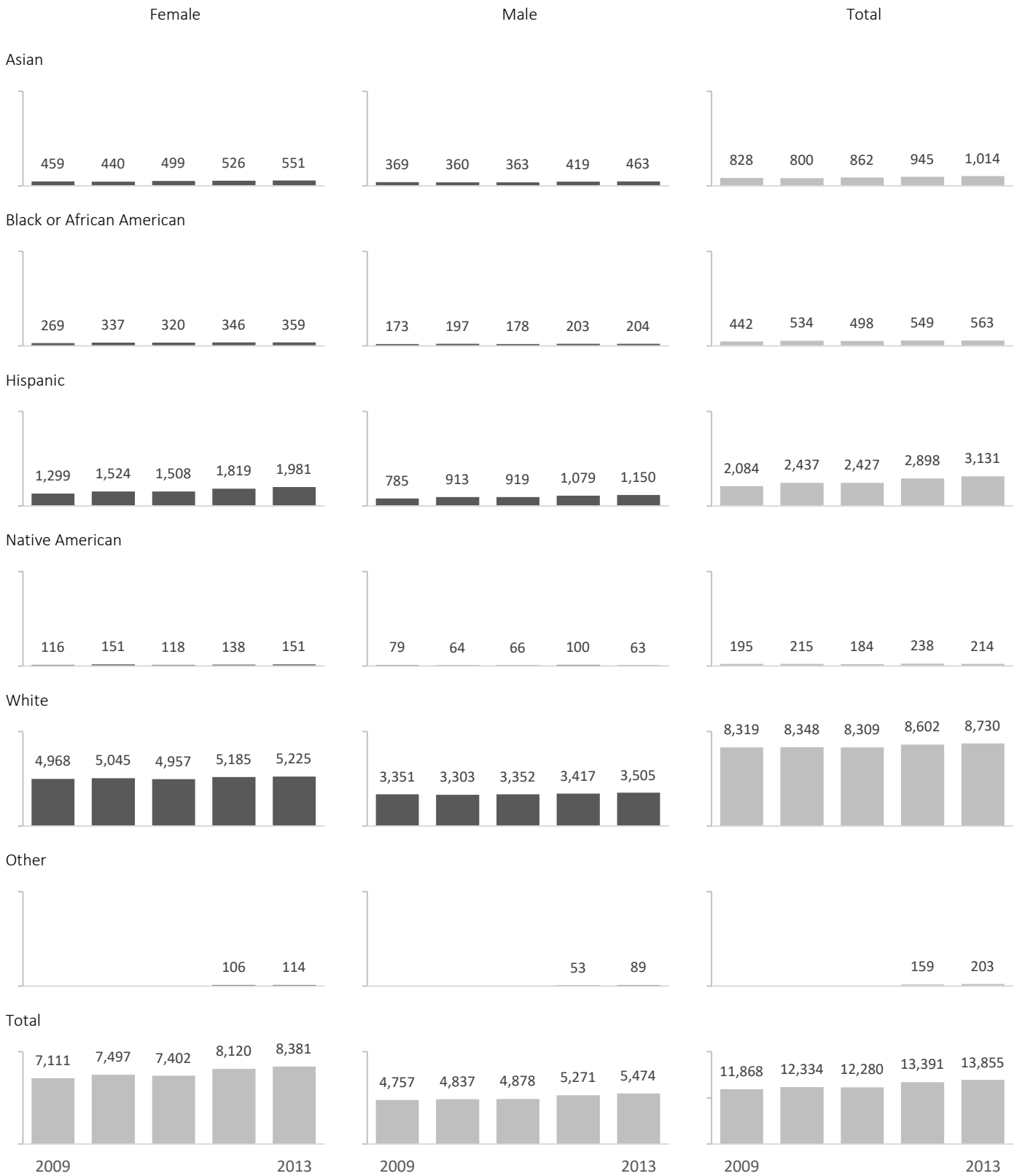
Percentage of Graduates within Race and Ethnic Group by High School Tier

Tier	Asian	Black	Hispanic	Native American	White	Other
1	34.8%	13.9%	6.8%	4.0%	26.0%	11.6%
2	28.7%	20.7%	16.9%	11.8%	32.2%	32.5%
3	13.8%	16.7%	17.6%	7.3%	17.0%	20.5%
4	12.6%	20.8%	21.2%	8.9%	11.4%	10.9%
5	6.6%	13.2%	21.3%	25.6%	4.6%	9.1%
6	1.6%	5.6%	4.6%	28.2%	4.2%	6.9%
7	1.2%	6.5%	7.8%	6.9%	2.2%	4.2%
8	0.2%	1.0%	1.8%	3.8%	1.3%	2.1%
9	0.2%	1.0%	1.3%	1.9%	0.8%	1.2%
10	0.1%	0.1%	0.3%	1.2%	0.2%	0.2%
Unknown	0.1%	0.6%	0.4%	0.3%	0.2%	0.8%
Total	100%	100%	100%	100%	100%	100%

Note: Arizona public high schools are ranked based on (1) their six-year Bachelor's Degree completion rates and (2) their number of graduates, and are binned into equally sized tiers containing 10 percent of all high schools. Tier one represents the 10 percent of high schools with the highest Bachelor's Degree completion rates. The UNK grouping includes all Arizona public high school graduates whose high school is unknown. The "Other" race and ethnicity grouping includes Multiracial, Native Hawaiian and other Pacific Islanders and graduates whose race and ethnicity is unknown.

Arizona Public High School Graduates

Exhibit PC.7: Number of Graduates Completing Bachelor's Degrees Within Six Years of Graduation by Gender and Race Ethnicity



Arizona Public High School Graduates

Exhibit PC.8: Percentage of Graduates Completing Bachelor's Degrees Within Six Years of Graduation by Gender and Race Ethnicity

